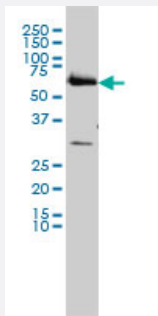


CCT6B monoclonal antibody (M01), clone 1A4

Catalog # H00010693-M01

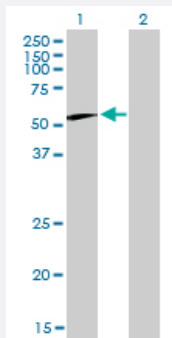
Size 100 ug

Applications



Western Blot (Cell lysate)

CCT6B monoclonal antibody (M01), clone 1A4 Western Blot analysis of CCT6B expression in HL-60 (Cat # L014V1).

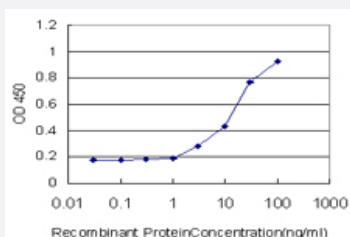


Western Blot (Transfected lysate)

Western Blot analysis of CCT6B expression in transfected 293T cell line by CCT6B monoclonal antibody (M01), clone 1A4.

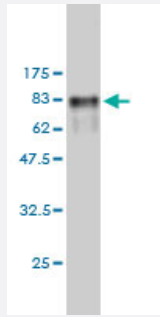
Lane 1: CCT6B transfected lysate(57.8 KDa).

Lane 2: Non-transfected lysate.



Sandwich ELISA (Recombinant protein)

Detection limit for recombinant GST tagged CCT6B is approximately 0.3ng/ml as a capture antibody.



Western Blot detection against Immunogen (84.04 KDa) .

Specification

Product Description	Mouse monoclonal antibody raised against a full length recombinant CCT6B.
Immunogen	CCT6B (AAH27591, 1 a.a. ~ 530 a.a) full-length recombinant protein with GST tag. MW of the GST tag alone is 26 KDa.
Sequence	MAAIKAVNSKAEVARAQAALAVNICAARGLQDVLRTNLGPKGTMKMLASGAGDIKLTGDGNVLLD EMQIQHPTASLIAKVATAQDDVTGDTTNSVLIIGELLKQADLYISEGLHPRIAEGFEAAKIKALEVLE EVKVTKEMKRKILLDVARTSLQTKVHAELADVLTEVVVDSVLAVRRPGYPIDLFMVEIMEMKHKLG TDTKLIQGLVLDHGARHPDMKKRVEDAFILCNVSLEYEKTEVNSGFFYKTAAEEKEKLKAERKFIE DRVQKIIDLKDKVCAQSNKGFVVINQKGIDPFSLDSLAKHGVALRRAKRRNMERLSLACGGMAYN SFEDLTVDCLGHAGLVYEYTLGEEKFTFIEECVNPCSVTLLVKGPNKHTLTQVKDAIRDGLRAIKNA IEDGCMVPGAGAIEVAMAEALVTYKNSIKGRARLGVQAFADALLIPKVLAQNAGYDPQETLVKVQ AEHVESKQLVGVDLNTGEPMVAADAGVWDNYCVKKQLLHSCVTIATNILLVDEIMRAGMSSLK
Host	Mouse
Reactivity	Human
Isotype	IgG2a kappa
Quality Control Testing	Antibody Reactive Against Recombinant Protein. Western Blot detection against Immunogen (84.04 KDa) .
Storage Buffer	In 1x PBS, pH 7.4
Storage Instruction	Store at -20°C or lower. Aliquot to avoid repeated freezing and thawing.

Applications

- Western Blot (Cell lysate)

CCT6B monoclonal antibody (M01), clone 1A4 Western Blot analysis of CCT6B expression in HL-60 (Cat # L014V1).

[Protocol Download](#)

- Western Blot (Transfected lysate)

Western Blot analysis of CCT6B expression in transfected 293T cell line by CCT6B monoclonal antibody (M01), clone 1A4.

Lane 1: CCT6B transfected lysate(57.8 KDa).

Lane 2: Non-transfected lysate.

[Protocol Download](#)

- Western Blot (Recombinant protein)

[Protocol Download](#)

- Sandwich ELISA (Recombinant protein)

Detection limit for recombinant GST tagged CCT6B is approximately 0.3ng/ml as a capture antibody.

[Protocol Download](#)

- ELISA

Gene Info — CCT6B

Entrez GeneID [10693](#)

GeneBank Accession# [BC027591](#)

Protein Accession# [AAH27591](#)

Gene Name CCT6B

Gene Alias CCT-zeta-2, CCTZ-2, Cctz2, TCP-1-zeta-2, TSA303

Gene Description chaperonin containing TCP1, subunit 6B (zeta 2)

Omim ID [610730](#)

Gene Ontology [Hyperlink](#)

Gene Summary This gene encodes a molecular chaperone that is a member of the chaperonin containing TCP1 complex (CCT), also known as the TCP1 ring complex (TRiC). This complex consists of two identical stacked rings, each containing eight different proteins. Unfolded polypeptides enter the central cavity of the complex and are folded in an ATP-dependent manner. The complex folds various proteins, including actin and tubulin. Alternate transcriptional splice variants of this gene have been observed but have not been thoroughly characterized. [provided by RefSeq]

Other Designations CCT-zeta-like|T-complex protein 1, zeta-2 subunit|TCP-1-zeta-like|chaperonin containing TCP1, subunit 6B|testis-specific Tcp20|testis-specific protein TSA303