

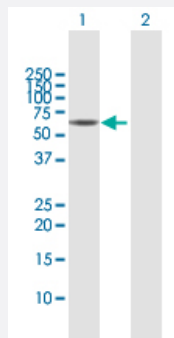
MaxPab®

CCT6B MaxPab rabbit polyclonal antibody (D01)

Catalog # H00010693-D01

Size 100 uL

Applications

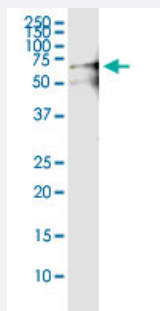


Western Blot (Transfected lysate)

Western Blot analysis of CCT6B expression in transfected 293T cell line ([H00010693-T02](#)) by CCT6B MaxPab polyclonal antibody.

Lane 1: CCT6B transfected lysate(57.80 kDa).

Lane 2: Non-transfected lysate.



Immunoprecipitation

Immunoprecipitation of CCT6B transfected lysate using anti-CCT6B MaxPab rabbit polyclonal antibody and Protein A Magnetic Bead, and immunoblotted with CCT6B purified MaxPab mouse polyclonal antibody (B01P) ([H00010693-B01P](#)).

Specification

Product Description

Rabbit polyclonal antibody raised against a full-length human CCT6B protein.

Immunogen

CCT6B (AAH27591.1, 1 a.a. ~ 530 a.a) full-length human protein.

Sequence

MAAIKAVNSKAEVARAQAALAVNICAARGLDVLRITNLGPKGTMKMLASGAGDIKLTGDGNVLLD
EMQIQHPTASLIAKVATAQDDVTGDTTSNVLIIGELLKQADLYISEGLHPRIAEGFEAAKIKALEVLE
EVKVTKEMKRKILLDVARTSLQTKVHAELADVLTEVVVDSVLAVRRPGYPIDLFMVEIMEMKHKL
GTDTKLIQGLVLDHGARHPDMKKRVEDAFILICNVSLYEKTEVNSGFFYKTAEKEKLKAERKFIE
DRVQKIIDLKDKVCAQSNKGFVVINQKGDPSLDSLAKHGVALRRARRNMRSLACGGMVAVN
SFEDLTVDCLGAGLVYEYTLGEEKFTFIEECVNPSCVTLLVKGPKNKHTLTQVKDAIRDGLRAIKNA
IEDGCMVPGAGAIEVAMAEALVTYKNSIKGRARLGVQAFADALLIPKVLAQNAGYDPQETLVKVQ
AEHVESKQLVGVDLNTGPEMVAADAGVWDNYCVKKQLLHSCVTIATNILLVDEIMRAGMSSLK

Host	Rabbit
Reactivity	Human
Quality Control Testing	Antibody reactive against mammalian transfected lysate.
Storage Buffer	No additive
Storage Instruction	Store at -20°C or lower. Aliquot to avoid repeated freezing and thawing.

Applications

- Western Blot (Transfected lysate)

Western Blot analysis of CCT6B expression in transfected 293T cell line ([H00010693-T02](#)) by CCT6B MaxPab polyclonal antibody.

Lane 1: CCT6B transfected lysate(57.80 KDa).

Lane 2: Non-transfected lysate.

[Protocol Download](#)

- Immunoprecipitation

Immunoprecipitation of CCT6B transfected lysate using anti-CCT6B MaxPab rabbit polyclonal antibody and Protein A Magnetic Bead, and immunoblotted with CCT6B purified MaxPab mouse polyclonal antibody (B01P) ([H00010693-B01P](#)).

[Protocol Download](#)

Gene Info — CCT6B

Entrez GeneID	10693
GeneBank Accession#	BC027591.1
Protein Accession#	AAH27591.1
Gene Name	CCT6B
Gene Alias	CCT-zeta-2, CCTZ-2, Cctz2, TCP-1-zeta-2, TSA303
Gene Description	chaperonin containing TCP1, subunit 6B (zeta 2)
Omim ID	610730
Gene Ontology	Hyperlink

Gene Summary

This gene encodes a molecular chaperone that is a member of the chaperonin containing TCP1 complex (CCT), also known as the TCP1 ring complex (TRiC). This complex consists of two identical stacked rings, each containing eight different proteins. Unfolded polypeptides enter the central cavity of the complex and are folded in an ATP-dependent manner. The complex folds various proteins, including actin and tubulin. Alternate transcriptional splice variants of this gene have been observed but have not been thoroughly characterized. [provided by RefSeq]

Other Designations

CCT-zeta-like|T-complex protein 1, zeta-2 subunit|TCP-1-zeta-like|chaperonin containing TCP1, subunit 6B|testis-specific Tcp20|testis-specific protein TSA303