

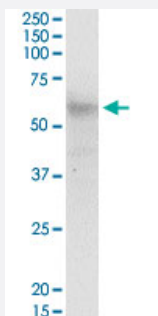
MaxPab®

## CCT6B purified MaxPab mouse polyclonal antibody (B01P)

Catalog # H00010693-B01P

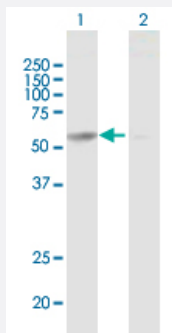
Size 50 ug

### Applications



#### Western Blot (Tissue lysate)

CCT6B MaxPab polyclonal antibody. Western Blot analysis of CCT6B expression in human spleen.



#### Western Blot (Transfected lysate)

Western Blot analysis of CCT6B expression in transfected 293T cell line ([H00010693-T01](#)) by CCT6B MaxPab polyclonal antibody.

Lane 1: CCT6B transfected lysate(58.3 kDa).

Lane 2: Non-transfected lysate.

### Specification

#### Product Description

Mouse polyclonal antibody raised against a full-length human CCT6B protein.

#### Immunogen

CCT6B (AAH27591.1, 1 a.a. ~ 530 a.a) full-length human protein.

#### Sequence

MAAIKAVNSKAEVARAQAALAVNICAARGLQDVLRTNLGPKGTMKMLASGAGDIKLTGDGNVLLD  
EMQIQHPTASLIAKVATAQDDVTGDTTSNVLIIGELLKQADLYISEGLHPRIAEGFEAAKIKALEVLE  
EVKVTKEMKRKILLDVARTSLQTKVHAELADVLTEVVVDSVLAVRRPGYPIDLFMVEIMEMKHKLG  
TDTKLIQGLVLDHGARHPDMKKRVEDAFILICNVSLEYEKTEVNSGFFYKTAAEEKEKLVAERKFIE  
DRVQKIIDLKDKVCAQSNKGFVVINQKGDPFSLDSLAKHGVALRRAKRRNMRSLACGGMAYN  
SFEDLTVDCLGHAGLVYEYTLGEEKFTFIEECVNPCSVTLLVKGPNKHTLTQVKDAIRDGLRAIKNA  
IEDGCMVPGAGAIEVAMAEALVTYKNSIKGRARLGVQAFADALLIIPKVLAQNAGYDPQETLVKVQ  
AEHVESKQLVGVDLNTGPEMVAADAGVWDNYCVKKQLLHSCTVIATNILLVDEIMRAGMSSLK

Host	Mouse
Reactivity	Human
Quality Control Testing	Antibody reactive against mammalian transfected lysate.
Storage Buffer	In 1x PBS, pH 7.4
Storage Instruction	Store at -20°C or lower. Aliquot to avoid repeated freezing and thawing.

## Applications

- Western Blot (Tissue lysate)

CCT6B MaxPab polyclonal antibody. Western Blot analysis of CCT6B expression in human spleen.

[Protocol Download](#)

- Western Blot (Transfected lysate)

Western Blot analysis of CCT6B expression in transfected 293T cell line ([H00010693-T01](#)) by CCT6B MaxPab polyclonal antibody.

Lane 1: CCT6B transfected lysate(58.3 KDa).

Lane 2: Non-transfected lysate.

[Protocol Download](#)

## Gene Info — CCT6B

Entrez GeneID	<a href="#">10693</a>
GeneBank Accession#	<a href="#">BC027591.1</a>
Protein Accession#	<a href="#">AAH27591.1</a>
Gene Name	CCT6B
Gene Alias	CCT-zeta-2, CCTZ-2, Cctz2, TCP-1-zeta-2, TSA303
Gene Description	chaperonin containing TCP1, subunit 6B (zeta 2)
Omim ID	<a href="#">610730</a>
Gene Ontology	<a href="#">Hyperlink</a>

**Gene Summary**

This gene encodes a molecular chaperone that is a member of the chaperonin containing TCP1 complex (CCT), also known as the TCP1 ring complex (TRiC). This complex consists of two identical stacked rings, each containing eight different proteins. Unfolded polypeptides enter the central cavity of the complex and are folded in an ATP-dependent manner. The complex folds various proteins, including actin and tubulin. Alternate transcriptional splice variants of this gene have been observed but have not been thoroughly characterized. [provided by RefSeq]

**Other Designations**

CCT-zeta-like|T-complex protein 1, zeta-2 subunit|TCP-1-zeta-like|chaperonin containing TCP1, subunit 6B|testis-specific Tcp20|testis-specific protein TSA303