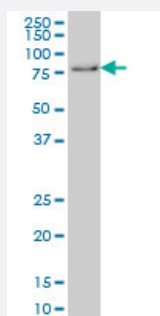


GMEB1 monoclonal antibody (M01), clone 2A8

Catalog # H00010691-M01

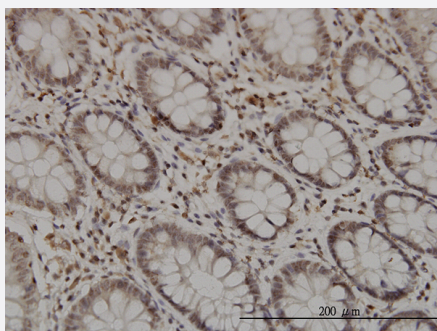
Size 100 ug

Applications



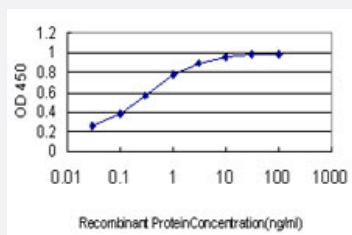
Western Blot (Cell lysate)

GMEB1 monoclonal antibody (M01), clone 2A8 Western Blot analysis of GMEB1 expression in HeLa S3 NE (Cat # L013V3).



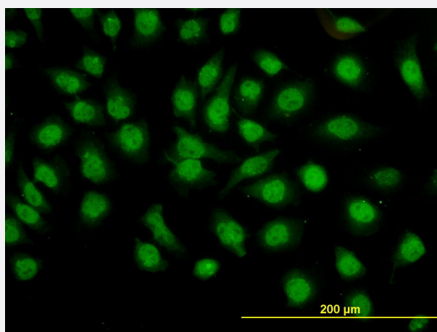
Immunohistochemistry (Formalin/PFA-fixed paraffin-embedded sections)

Immunoperoxidase of monoclonal antibody to GMEB1 on formalin-fixed paraffin-embedded human colon. [antibody concentration 3 ug/ml]



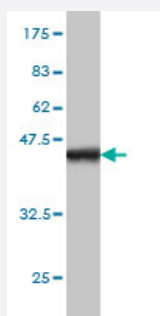
Sandwich ELISA (Recombinant protein)

Detection limit for recombinant GST tagged GMEB1 is approximately 0.03ng/ml as a capture antibody.



Immunofluorescence

Immunofluorescence of monoclonal antibody to GMEB1 on HeLa cell. [antibody concentration 10 ug/ml]



Western Blot detection against Immunogen (36.41 KDa) .

Specification

Product Description	Mouse monoclonal antibody raised against a partial recombinant GMEB1.
Immunogen	GMEB1 (NP_077808, 467 a.a. ~ 563 a.a) partial recombinant protein with GST tag. MW of the GST tag alone is 26 KDa.
Sequence	TAMQDGSTLGNMTTMVSPVELVAMESGLTSAIQAVESTSEDGQTIIIDPAPDPEAEDTEGKAVILETELRTTEEKVVAEMEEHQHQVHNVENVLED
Host	Mouse
Reactivity	Human
Interspecies Antigen Sequence	Mouse (95); Rat (95)
Isotype	IgG2a Kappa
Quality Control Testing	Antibody Reactive Against Recombinant Protein. Western Blot detection against Immunogen (36.41 KDa) .
Storage Buffer	In 1x PBS, pH 7.4
Storage Instruction	Store at -20°C or lower. Aliquot to avoid repeated freezing and thawing.

Applications

- Western Blot (Cell lysate)

GMEB1 monoclonal antibody (M01), clone 2A8 Western Blot analysis of GMEB1 expression in Hela S3 NE (Cat # L013V3).

[Protocol Download](#)

- Western Blot (Recombinant protein)

[Protocol Download](#)

- Immunohistochemistry (Formalin/PFA-fixed paraffin-embedded sections)

Immunoperoxidase of monoclonal antibody to GMEB1 on formalin-fixed paraffin-embedded human colon. [antibody concentration 3 ug/ml]

[Protocol Download](#)

- Sandwich ELISA (Recombinant protein)

Detection limit for recombinant GST tagged GMEB1 is approximately 0.03ng/ml as a capture antibody.

[Protocol Download](#)

- ELISA

- Immunofluorescence

Immunofluorescence of monoclonal antibody to GMEB1 on HeLa cell. [antibody concentration 10 ug/ml]

Gene Info — GMEB1

Entrez GeneID	10691
---------------	-----------------------

GeneBank Accession#	NM_024482
---------------------	---------------------------

Protein Accession#	NP_077808
--------------------	---------------------------

Gene Name	GMEB1
-----------	-------

Gene Alias	P96PIF, PIF96
------------	---------------

Gene Description	glucocorticoid modulatory element binding protein 1
------------------	---

Omim ID	604409
---------	------------------------

Gene Ontology

[Hyperlink](#)

Gene Summary

This gene is a member of KDWK gene family. The product of this gene associates with GMEB2 protein, and the complex is essential for parvovirus DNA replication. Study of rat homolog implicates the role of this gene in modulation of transactivation by the glucocorticoid receptor bound to glucocorticoid response elements. Two alternative spliced transcript variants encoding different isoforms exist. [provided by RefSeq]

Other Designations

OTTHUMP00000003779|OTTHUMP00000003780|OTTHUMP00000003781