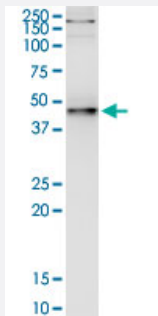


PNMA2 (Human) IP-WB Antibody Pair

Catalog # H00010687-PW1

Size 1 Set

Applications



Immunoprecipitation of PNMA2 transfected lysate using mouse monoclonal anti-PNMA2 and Protein A Magnetic Bead ([U0007](#)), and immunoblotted with mouse monoclonal anti-PNMA2.

Specification

Product Description	This IP-WB antibody pair set comes with one antibody for immunoprecipitation and another to detect the precipitated protein in western blot.
Reactivity	Human
Interspecies Antigen Sequence	Mouse (78); Rat (80)
Quality Control Testing	Immunoprecipitation-Western Blot (IP-WB) Immunoprecipitation of PNMA2 transfected lysate using mouse monoclonal anti-PNMA2 and Protein A Magnetic Bead (U0007), and immunoblotted with mouse monoclonal anti-PNMA2.
Supplied Product	Antibody pair set content: 1. Antibody pair for IP: mouse monoclonal anti-PNMA2 (300 ug) 2. Antibody pair for WB: mouse monoclonal anti-PNMA2 (50 ug)
Storage Instruction	Store reagents of the antibody pair set at -20°C or lower. Please aliquot to avoid repeated freeze thaw cycle. Reagents should be returned to -20°C storage immediately after use.

Applications

- Immunoprecipitation-Western Blot

[Protocol Download](#)

Gene Info — PNMA2

Entrez GeneID	10687
Gene Name	PNMA2
Gene Alias	KIAA0883, MA2, MM2, RGAG2
Gene Description	paraneoplastic antigen MA2
Omim ID	603970
Gene Ontology	Hyperlink
Other Designations	onconeural antigen MA2 paraneoplastic neuronal antigen retrotransposon gag domain containing 2