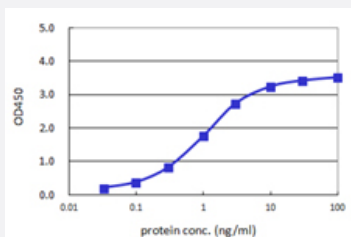


# PNMA2 (Human) Matched Antibody Pair

Catalog # H00010687-AP44

Size 1 Set

## Applications



Sandwich ELISA detection sensitivity ranging from 0.03 ng/ml to 100 ng/ml.

## Specification

<b>Product Description</b>	This antibody pair set comes with a matched antibody pair to detect and quantify the protein level of human PNMA2.
<b>Reactivity</b>	Human
<b>Interspecies Antigen Sequence</b>	Mouse (78); Rat (80)
<b>Quality Control Testing</b>	Standard curve using recombinant protein ( H00010687-P01 ) as an analyte. Sandwich ELISA detection sensitivity ranging from 0.03 ng/ml to 100 ng/ml.
<b>Supplied Product</b>	Antibody pair set content: 1. Capture antibody: mouse monoclonal anti-PNMA2, IgG2a Kappa (100 ug) 2. Detection antibody: biotinylated mouse monoclonal anti-PNMA2, IgG2a Kappa (50 ug) *Reagents are sufficient for at least 3-5 x 96 well plates using recommended protocols.
<b>Storage Instruction</b>	Store reagents of the antibody pair set at -20°C or lower. Please aliquot to avoid repeated freeze thaw cycle. Reagents should be returned to -20°C storage immediately after use.

## Applications

- ELISA Pair (Recombinant protein)

[Protocol Download](#)

## Gene Info — PNMA2

Entrez GeneID	<a href="#">10687</a>
Gene Name	PNMA2
Gene Alias	KIAA0883, MA2, MM2, RGAG2
Gene Description	paraneoplastic antigen MA2
Omim ID	<a href="#">603970</a>
Gene Ontology	<a href="#">Hyperlink</a>
Other Designations	onconeural antigen MA2 paraneoplastic neuronal antigen retrotransposon gag domain containing 2