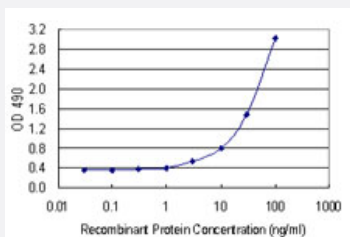


PNMA2 (Human) Matched Antibody Pair

Catalog # H00010687-AP43

Size 1 Set

Applications



Sandwich ELISA detection sensitivity ranging from 0.3 ng/ml to 100 ng/ml.

Specification

Product Description	This antibody pair set comes with a matched antibody pair to detect and quantify the protein level of human PNMA2.
Reactivity	Human
Interspecies Antigen Sequence	Mouse (78); Rat (80)
Quality Control Testing	Standard curve using recombinant protein (H00010687-P01) as an analyte. Sandwich ELISA detection sensitivity ranging from 0.3 ng/ml to 100 ng/ml.
Supplied Product	Antibody pair set content: 1. Capture antibody: mouse monoclonal anti-PNMA2 (100 ug) 2. Detection antibody: biotinylated mouse monoclonal anti-PNMA2, IgG2b Kappa (50 ug) *Reagents are sufficient for at least 3-5 x 96 well plates using recommended protocols.
Storage Instruction	Store reagents of the antibody pair set at -20°C or lower. Please aliquot to avoid repeated freeze thaw cycle. Reagents should be returned to -20°C storage immediately after use.

Applications

- ELISA Pair (Recombinant protein)

[Protocol Download](#)

Gene Info — PNMA2

Entrez GeneID	10687
Gene Name	PNMA2
Gene Alias	KIAA0883, MA2, MM2, RGAG2
Gene Description	paraneoplastic antigen MA2
Omim ID	603970
Gene Ontology	Hyperlink
Other Designations	onconeural antigen MA2 paraneoplastic neuronal antigen retrotransposon gag domain containing 2