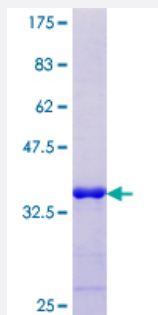


LBX1 (Human) Recombinant Protein (Q01)

Catalog # H00010660-Q01

Size 25 ug, 10 ug

Applications



Specification

Product Description	Human LBX1 partial ORF (NP_006553.2, 133 a.a. - 219 a.a.) recombinant protein with GST-tag at N-terminal.
Sequence	TNHQIYELEKRFLYQKYLSPADRDQIAQQLGLTNAQVITWVFQNRRAKLKRDLEEMKADVESAKKLG PSGQMDIVALAELEQNSEATA
Host	Wheat Germ (in vitro)
Theoretical MW (kDa)	35.20
Preparation Method	in vitro wheat germ expression system
Purification	Glutathione Sepharose 4 Fast Flow
Quality Control Testing	12.5% SDS-PAGE Stained with Coomassie Blue.
Storage Buffer	50 mM Tris-HCl, 10 mM reduced Glutathione, pH=8.0 in the elution buffer.
Storage Instruction	Store at -80°C. Aliquot to avoid repeated freezing and thawing.
Note	Best use within three months from the date of receipt of this protein.

Applications

- Enzyme-linked Immunoabsorbent Assay
- Western Blot (Recombinant protein)
- Antibody Production
- Protein Array

Gene Info — LBX1

Entrez GeneID [10660](#)

GeneBank Accession# [NM_006562](#)

Protein Accession# [NP_006553.2](#)

Gene Name LBX1

Gene Alias HPX-6, HPX6, LBX1H, homeobox

Gene Description ladybird homeobox 1

Omim ID [604255](#)

Gene Ontology [Hyperlink](#)

Gene Summary This gene and the orthologous mouse gene were found by their homology to the Drosophila ladybird early and late homeobox genes. In the mouse, this gene is a key regulator of muscle precursor cell migration and is required for the acquisition of dorsal identities of forelimb muscles. [provided by RefSeq]

Other Designations OTTHUMP00000180669|lady bird-like homeobox|ladybird homeobox homolog 1|transcription factor similar to D. melanogaster homeodomain protein lady bird late