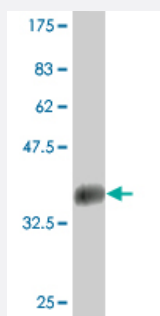


LBX1 monoclonal antibody (M02), clone 2A9

Catalog # H00010660-M02

Size 100 ug

Applications



Western Blot detection against Immunogen (35.2 KDa) .

Specification

Product Description	Mouse monoclonal antibody raised against a full length recombinant LBX1.
Immunogen	LBX1 (NP_006553.2, 133 a.a. ~ 219 a.a) full-length recombinant protein with GST tag. MW of the GST tag alone is 26 KDa.
Sequence	TNHQIYELEKRFLYQKYLSPADRDQIAQQLGLTNAQVITWVFQNRRAKLKRDLEEMKADVESAKKLG PSGQMDIVALAELEQNSEATA
Host	Mouse
Reactivity	Human
Isotype	IgG2a Kappa
Quality Control Testing	Antibody Reactive Against Recombinant Protein. Western Blot detection against Immunogen (35.2 KDa) .
Storage Buffer	In 1x PBS, pH 7.4
Storage Instruction	Store at -20°C or lower. Aliquot to avoid repeated freezing and thawing.

Applications

- Western Blot (Recombinant protein)

[Protocol Download](#)

- ELISA

Gene Info — LBX1

Entrez GeneID [10660](#)

GeneBank Accession# [NM_006562](#)

Protein Accession# [NP_006553.2](#)

Gene Name LBX1

Gene Alias HPX-6, HPX6, LBX1H, homeobox

Gene Description ladybird homeobox 1

Omim ID [604255](#)

Gene Ontology [Hyperlink](#)

Gene Summary This gene and the orthologous mouse gene were found by their homology to the Drosophila ladybird early and late homeobox genes. In the mouse, this gene is a key regulator of muscle precursor cell migration and is required for the acquisition of dorsal identities of forelimb muscles. [provided by RefSeq]

Other Designations OTTHUMP00000180669||lady bird-like homeobox||ladybird homeobox homolog 1|transcription factor similar to D. melanogaster homeodomain protein lady bird late