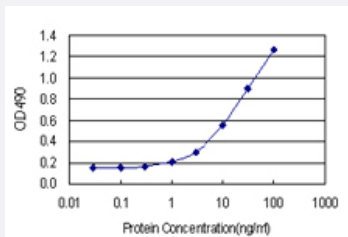


# CAMKK2 (Human) Matched Antibody Pair

Catalog # H00010645-AP11

Size 1 Set

## Applications



Sandwich ELISA detection sensitivity ranging from 0.3 ng/ml to 100 ng/ml.

## Specification

<b>Product Description</b>	This antibody pair set comes with a matched antibody pair to detect and quantify the protein level of human CAMKK2.
<b>Reactivity</b>	Human
<b>Interspecies Antigen Sequence</b>	Mouse (92); Rat (93)
<b>Quality Control Testing</b>	Standard curve using recombinant protein ( H00010645-P01 ) as an analyte. Sandwich ELISA detection sensitivity ranging from 0.3 ng/ml to 100 ng/ml.
<b>Supplied Product</b>	Antibody pair set content: 1. Capture antibody: rabbit MaxPab® affinity purified polyclonal anti-CAMKK2 (100 ug) 2. Detection antibody: mouse monoclonal anti-CAMKK2, IgG1 Kappa (20 ug) *Reagents are sufficient for at least 1-2 x 96 well plates using recommended protocols.
<b>Storage Instruction</b>	Store reagents of the antibody pair set at -20°C or lower. Please aliquot to avoid repeated freeze thaw cycle. Reagents should be returned to -20°C storage immediately after use.

## Applications

- ELISA Pair (Recombinant protein)

[Protocol Download](#)

## Gene Info — CAMKK2

**Entrez GeneID** [10645](#)

**Gene Name** CAMKK2

**Gene Alias** CAMKK, CAMKKB, KIAA0787, MGC15254

**Gene Description** calcium/calmodulin-dependent protein kinase kinase 2, beta

**Gene Ontology** [Hyperlink](#)

**Gene Summary** The product of this gene belongs to the Serine/Threonine protein kinase family, and to the Ca(2+)/calmodulin-dependent protein kinase subfamily. This protein plays a role in the calcium/calmodulin-dependent (CaM) kinase cascade by phosphorylating the downstream kinases CaMK1 and CaMK4. Seven transcript variants encoding six distinct isoforms have been identified for this gene. Additional splice variants have been described but their full-length nature has not been determined. The identified isoforms exhibit a distinct ability to undergo autophosphorylation and to phosphorylate the downstream kinases. [provided by RefSeq]

**Other Designations** CAMKK beta protein|calcium/calmodulin-dependent protein kinase beta|calcium/calmodulin-dependent protein kinase kinase 2 beta

## Pathway

- [Adipocytokine signaling pathway](#)

## Disease

- [Agoraphobia](#)
- [Anxiety Disorders](#)
- [Bipolar Disorder](#)
- [Genetic Predisposition to Disease](#)
- [Kidney Failure](#)
- [Panic Disorder](#)

- [Phobic Disorders](#)
- [Tobacco Use Disorder](#)