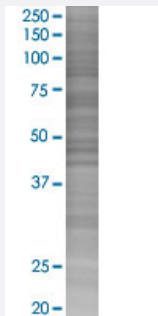


EXOC5 293T Cell Transient Overexpression Lysate(Denatured)

Catalog # H00010640-T02

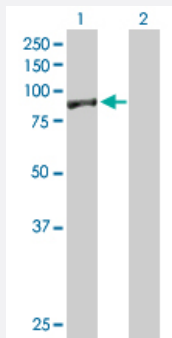
Size 100 uL

Applications



SDS-PAGE Gel

EXOC5 transfected lysate.



Western Blot

Lane 1: EXOC5 transfected lysate (81.90 KDa)

Lane 2: Non-transfected lysate.

Specification

Transfected Cell Line	293T
Plasmid	pCMV-EXOC5 full-length
Host	Human
Theoretical MW (kDa)	81.9
Interspecies Antigen Sequence	Mouse (98); Rat (98)

Quality Control Testing

Transient overexpression cell lysate was tested with Anti-EXOC5 antibody ([H00010640-B01P](#)) by Western Blots.
SDS-PAGE Gel
EXOC5 transfected lysate.
Western Blot
Lane 1: EXOC5 transfected lysate (81.90 KDa)
Lane 2: Non-transfected lysate.

Storage Buffer

1X Sample Buffer (50 mM Tris-HCl, 2% SDS, 10% glycerol, 300 mM 2-mercaptoethanol, 0.01% Bromophenol blue)

Storage Instruction

Store at -80°C. Aliquot to avoid repeated freezing and thawing.

Applications

- Western Blot

Gene Info — EXOC5

Entrez GeneID

[10640](#)

GeneBank Accession#

[NM_006544](#)

Protein Accession#

[NP_006535.1](#)

Gene Name

EXOC5

Gene Alias

DKFZp666H126, HSEC10, PRO1912, SEC10, SEC10L1, SEC10P

Gene Description

exocyst complex component 5

Omim ID

[604469](#)

Gene Ontology

[Hyperlink](#)

Gene Summary

The protein encoded by this gene is a component of the exocyst complex, a multiple protein complex essential for targeting exocytic vesicles to specific docking sites on the plasma membrane. Though best characterized in yeast, the component proteins and functions of exocyst complex have been demonstrated to be highly conserved in higher eukaryotes. At least eight components of the exocyst complex, including this protein, are found to interact with the actin cytoskeletal remodeling and vesicle transport machinery. The complex is also essential for the biogenesis of epithelial cell surface polarity. [provided by RefSeq]

Other Designations

SEC10 protein|SEC10-like 1

Disease

- [Arthritis](#)