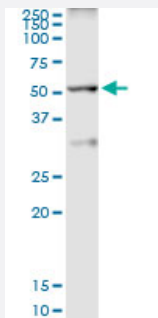


# TAF6L (Human) IP-WB Antibody Pair

Catalog # H00010629-PW2

Size 1 Set

## Applications



Immunoprecipitation of TAF6L transfected lysate using rabbit polyclonal anti-TAF6L and Protein A Magnetic Bead ([U0007](#)), and immunoblotted with mouse purified polyclonal anti-TAF6L.

## Specification

<b>Product Description</b>	This IP-WB antibody pair set comes with one antibody for immunoprecipitation and another to detect the precipitated protein in western blot.
<b>Reactivity</b>	Human
<b>Interspecies Antigen Sequence</b>	Mouse (93); Rat (93)
<b>Quality Control Testing</b>	Immunoprecipitation-Western Blot (IP-WB) Immunoprecipitation of TAF6L transfected lysate using rabbit polyclonal anti-TAF6L and Protein A Magnetic Bead ( <a href="#">U0007</a> ), and immunoblotted with mouse purified polyclonal anti-TAF6L.
<b>Supplied Product</b>	Antibody pair set content: 1. Antibody pair for IP: rabbit polyclonal anti-TAF6L (300 ul) 2. Antibody pair for WB: mouse purified polyclonal anti-TAF6L (50 ug)
<b>Storage Instruction</b>	Store reagents of the antibody pair set at -20°C or lower. Please aliquot to avoid repeated freeze thaw cycle. Reagents should be returned to -20°C storage immediately after use.

## Applications

- Immunoprecipitation-Western Blot

[Protocol Download](#)

## Gene Info — TAF6L

**Entrez GeneID** [10629](#)

**Gene Name** TAF6L

**Gene Alias** FLJ11136, MGC4288, PAF65A

**Gene Description** TAF6-like RNA polymerase II, p300/CBP-associated factor (PCAF)-associated factor, 65kDa

**Omim ID** [602946](#)

**Gene Ontology** [Hyperlink](#)

### Gene Summary

Initiation of transcription by RNA polymerase II requires the activities of more than 70 polypeptides. The protein that coordinates these activities is transcription factor IID (TFIID), which binds to the core promoter to position the polymerase properly, serves as the scaffold for assembly of the remainder of the transcription complex, and acts as a channel for regulatory signals. TFIID is composed of the TATA-binding protein (TBP) and a group of evolutionarily conserved proteins known as TBP-associated factors or TAFs. TAFs may participate in basal transcription, serve as coactivators, function in promoter recognition or modify general transcription factors (GTFs) to facilitate complex assembly and transcription initiation. This gene encodes a protein that is a component of the PCAF histone acetylase complex and structurally similar to one of the histone-like TAFs, TAF6. The PCAF histone acetylase complex, which is composed of more than 20 polypeptides some of which are TAFs, is required for myogenic transcription and differentiation. [provided by RefSeq]

**Other Designations** TAF6-like RNA polymerase II|TAF6-like RNA polymerase II, p300/CBP-associated factor (PCAF)-associated factor, 65 kD|p300/CBP-associated factor (PCAF)-associated factor 65

## Pathway

- [Basal transcription factors](#)