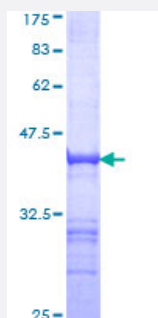


TRIM16 (Human) Recombinant Protein (Q01)

Catalog # H00010626-Q01

Size 25 ug, 10 ug

Applications



Specification

Product Description	Human TRIM16 partial ORF (NP_006461, 165 a.a. - 273 a.a.) recombinant protein with GST-tag at N-terminal.
Sequence	LDAARRDKEAELQCTQLDLERKCLKLNENAI SRLQANQKSVLVSVSEVKAVAEMQFGELLA AAVRK AQANVMLFLEEKEQAALSQANGIKAHLEYRSAEMEKSQELERMA
Host	Wheat Germ (in vitro)
Theoretical MW (kDa)	37.73
Interspecies Antigen Sequence	Mouse (77); Rat (76)
Preparation Method	in vitro wheat germ expression system
Purification	Glutathione Sepharose 4 Fast Flow
Quality Control Testing	12.5% SDS-PAGE Stained with Coomassie Blue.
Storage Buffer	50 mM Tris-HCl, 10 mM reduced Glutathione, pH=8.0 in the elution buffer.
Storage Instruction	Store at -80°C. Aliquot to avoid repeated freezing and thawing.
Note	Best use within three months from the date of receipt of this protein.

Applications

- Enzyme-linked Immunoabsorbent Assay
- Western Blot (Recombinant protein)
- Antibody Production
- Protein Array

Gene Info — TRIM16

Entrez GeneID	10626
---------------	-----------------------

GeneBank Accession#	NM_006470
---------------------	---------------------------

Protein Accession#	NP_006461
--------------------	---------------------------

Gene Name	TRIM16
-----------	--------

Gene Alias	EBBP
------------	------

Gene Description	tripartite motif-containing 16
------------------	--------------------------------

Omim ID	609505
---------	------------------------

Gene Ontology	Hyperlink
---------------	---------------------------

Gene Summary	This gene was identified as an estrogen and anti-estrogen regulated gene in epithelial cells stably expressing estrogen receptor. The protein encoded by this gene contains two B box domains and a coiled-coiled region that are characteristic of the B box zinc finger protein family. The proteins of this family have been reported to be involved in a variety of biological processes including cell growth, differentiation and pathogenesis. Expression of this gene was detected in most tissues. Its function, however, has not yet been determined. [provided by RefSeq]
--------------	--

Other Designations	estrogen-responsive B box protein
--------------------	-----------------------------------