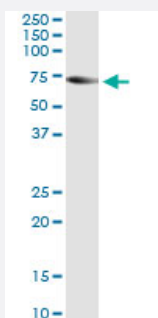


TRIM16 (Human) IP-WB Antibody Pair

Catalog # H00010626-PW1

Size 1 Set

Applications



Immunoprecipitation of TRIM16 transfected lysate using mouse monoclonal anti-TRIM16 and Protein A Magnetic Bead ([U0007](#)), and immunoblotted with rabbit polyclonal anti-TRIM16.

Specification

Product Description	This IP-WB antibody pair set comes with one antibody for immunoprecipitation and another to detect the precipitated protein in western blot.
Reactivity	Human
Interspecies Antigen Sequence	Mouse (77); Rat (76)
Quality Control Testing	Immunoprecipitation-Western Blot (IP-WB) Immunoprecipitation of TRIM16 transfected lysate using mouse monoclonal anti-TRIM16 and Protein A Magnetic Bead (U0007), and immunoblotted with rabbit polyclonal anti-TRIM16.
Supplied Product	Antibody pair set content: 1. Antibody pair for IP: mouse monoclonal anti-TRIM16 (300 ug) 2. Antibody pair for WB: rabbit polyclonal anti-TRIM16 (50 ul)
Storage Instruction	Store reagents of the antibody pair set at -20°C or lower. Please aliquot to avoid repeated freeze thaw cycle. Reagents should be returned to -20°C storage immediately after use.

Applications

- Immunoprecipitation-Western Blot

[Protocol Download](#)

Gene Info — TRIM16

Entrez GeneID [10626](#)

Gene Name TRIM16

Gene Alias EBBP

Gene Description tripartite motif-containing 16

Omim ID [609505](#)

Gene Ontology [Hyperlink](#)

Gene Summary This gene was identified as an estrogen and anti-estrogen regulated gene in epithelial cells stably expressing estrogen receptor. The protein encoded by this gene contains two B box domains and a coiled-coiled region that are characteristic of the B box zinc finger protein family. The proteins of this family have been reported to be involved in a variety of biological processes including cell growth, differentiation and pathogenesis. Expression of this gene was detected in most tissues. Its function, however, has not yet been determined. [provided by RefSeq]

Other Designations estrogen-responsive B box protein