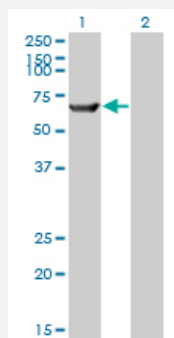


TRIM16 monoclonal antibody (M01A), clone 5F4

Catalog # H00010626-M01A

Size 200 uL

Applications

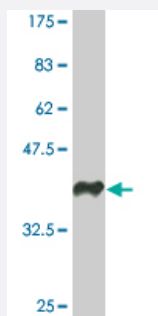


Western Blot (Transfected lysate)

Western Blot analysis of TRIM16 expression in transfected 293T cell line by TRIM16 monoclonal antibody (M01A), clone 5F4.

Lane 1: TRIM16 transfected lysate(64 KDa).

Lane 2: Non-transfected lysate.



Western Blot detection against Immunogen (37.73 KDa) .

Specification

Product Description	Mouse monoclonal antibody raised against a partial recombinant TRIM16.
Immunogen	TRIM16 (NP_006461, 165 a.a. ~ 273 a.a) partial recombinant protein with GST tag. MW of the GST tag alone is 26 KDa.
Sequence	LDAARRDKEAELQCTQLDLERKLLNENAI SRLQANQKSVLVSVSEVKAVAEMQFGELLA AVRK AQANVMLFLEEKEQAALSQANGIKAHLEYRSAEMEKSQELERMA
Host	Mouse
Reactivity	Human

Interspecies Antigen Sequence	Mouse (77); Rat (76)
Isotype	IgG2a Kappa
Quality Control Testing	Antibody Reactive Against Recombinant Protein. Western Blot detection against Immunogen (37.73 KDa) .
Storage Buffer	In ascites fluid
Storage Instruction	Store at -20°C or lower. Aliquot to avoid repeated freezing and thawing.

Applications

- Western Blot (Transfected lysate)

Western Blot analysis of TRIM16 expression in transfected 293T cell line by TRIM16 monoclonal antibody (M01A), clone 5F4.

Lane 1: TRIM16 transfected lysate(64 KDa).

Lane 2: Non-transfected lysate.

[Protocol Download](#)

- Western Blot (Recombinant protein)

[Protocol Download](#)

- ELISA

Gene Info — TRIM16

Entrez GeneID	10626
GeneBank Accession#	NM_006470
Protein Accession#	NP_006461
Gene Name	TRIM16
Gene Alias	EBBP
Gene Description	tripartite motif-containing 16
Omim ID	609505
Gene Ontology	Hyperlink

Gene Summary

This gene was identified as an estrogen and anti-estrogen regulated gene in epithelial cells stably expressing estrogen receptor. The protein encoded by this gene contains two B box domains and a coiled-coiled region that are characteristic of the B box zinc finger protein family. The proteins of this family have been reported to be involved in a variety of biological processes including cell growth, differentiation and pathogenesis. Expression of this gene was detected in most tissues. Its function, however, has not yet been determined. [provided by RefSeq]

Other Designations

estrogen-responsive B box protein