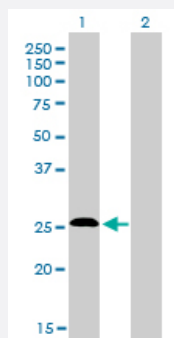


RBCK1 monoclonal antibody (M01), clone 3C3

Catalog # H00010616-M01

Size 100 ug

Applications

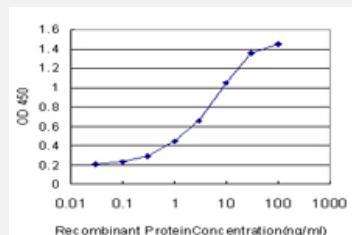


Western Blot (Transfected lysate)

Western Blot analysis of C20orf18 expression in transfected 293T cell line by C20orf18 monoclonal antibody (M01), clone 3C3.

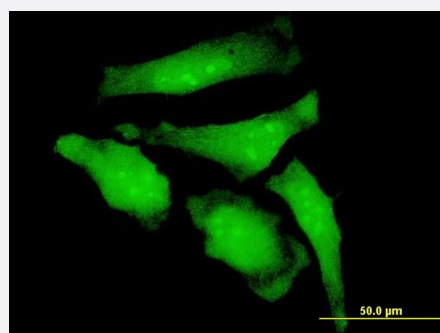
Lane 1: C20orf18 transfected lysate (25.7 KDa).

Lane 2: Non-transfected lysate.



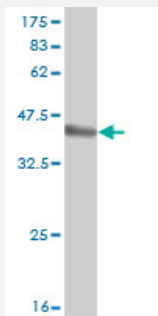
Sandwich ELISA (Recombinant protein)

Detection limit for recombinant GST tagged C20orf18 is approximately 0.03 ng/ml as a capture antibody.



Immunofluorescence

Immunofluorescence of monoclonal antibody to RBCK1 on HeLa cell .
[antibody concentration 10 ug/ml]



Western Blot detection against Immunogen (36.41 KDa) .

Specification

| | |
|--------------------------------------|---|
| Product Description | Mouse monoclonal antibody raised against a partial recombinant RBCK1. |
| Immunogen | RBCK1 (NP_006453, 3 a.a. ~ 99 a.a) partial recombinant protein with GST tag. MW of the GST tag alone is 26 KDa. |
| Sequence | TATPDGREDQERLWVSVEDAQMHTVTIWLTVRPDMTVASLKDMVFLDYGFPPVLQQWVIGQRLA RDQETLHSHGVRQNGDSAYLYLLSARNTSLNPQ |
| Host | Mouse |
| Reactivity | Human |
| Interspecies Antigen Sequence | Mouse (89); Rat (90) |
| Isotype | IgG2b Kappa |
| Quality Control Testing | Antibody Reactive Against Recombinant Protein. Western Blot detection against Immunogen (36.41 KDa) . |
| Storage Buffer | In 1x PBS, pH 7.4 |
| Storage Instruction | Store at -20°C or lower. Aliquot to avoid repeated freezing and thawing. |

Applications

● Western Blot (Transfected lysate)

Western Blot analysis of C20orf18 expression in transfected 293T cell line by C20orf18 monoclonal antibody (M01), clone 3C3.

Lane 1: C20orf18 transfected lysate(25.7 KDa).

Lane 2: Non-transfected lysate.

[Protocol Download](#)

- Western Blot (Recombinant protein)

[Protocol Download](#)

- Sandwich ELISA (Recombinant protein)

Detection limit for recombinant GST tagged C20orf18 is approximately 0.03ng/ml as a capture antibody.

[Protocol Download](#)

- ELISA

- Immunofluorescence

Immunofluorescence of monoclonal antibody to RBCK1 on HeLa cell . [antibody concentration 10 ug/ml]

Gene Info — RBCK1

Entrez GeneID [10616](#)

GeneBank Accession# [NM_006462](#)

Protein Accession# [NP_006453](#)

Gene Name RBCK1

Gene Alias C20orf18, HOIL1, RBCK2, RNF54, UBCE7IP3, XAP3, XAP4, ZRANB4

Gene Description RanBP-type and C3HC4-type zinc finger containing 1

Omim ID [610924](#)

Gene Ontology [Hyperlink](#)

Gene Summary The protein encoded by this gene is similar to mouse UIP28/UbcM4 interacting protein. Alternative splicing has been observed at this locus, resulting in distinct isoforms. [provided by RefSeq]

Other Designations HBV associated factor 4|OTTHUMP00000029921|OTTHUMP00000029922|RBCC protein interacting with PKC1|hepatitis B virus X-associated protein 4|ubiquitin conjugating enzyme 7 interacting protein 3