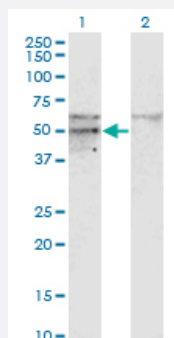


SC65 monoclonal antibody (M01), clone 1E12

Catalog # H00010609-M01

Size 100 ug

Applications

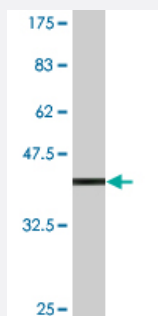


Western Blot (Transfected lysate)

Western Blot analysis of SC65 expression in transfected 293T cell line by SC65 monoclonal antibody (M01), clone 1E12.

Lane 1: SC65 transfected lysate (Predicted MW: 50.381 KDa).

Lane 2: Non-transfected lysate.



Western Blot detection against Immunogen (37.84 KDa) .

Specification

Product Description	Mouse monoclonal antibody raised against a partial recombinant SC65.
Immunogen	SC65 (NP_006446, 270 a.a. ~ 379 a.a) partial recombinant protein with GST tag. MW of the GST tag alone is 26 KDa.
Sequence	QCKVDCEANLTPNVGGYFVDK FVATMYHYLQFAYYKLNDVRQAARSAASYMLFDPKDSVMQQN LVYYRFHRRARWGLEEDFQPREEAMLYHNQTAE LRELLEFTHMYLQS
Host	Mouse
Reactivity	Human

Interspecies Antigen Sequence	Mouse (91)
Isotype	IgG2a Kappa
Quality Control Testing	Antibody Reactive Against Recombinant Protein. Western Blot detection against Immunogen (37.84 KDa) .
Storage Buffer	In 1x PBS, pH 7.4
Storage Instruction	Store at -20°C or lower. Aliquot to avoid repeated freezing and thawing.

Applications

- Western Blot (Transfected lysate)

Western Blot analysis of SC65 expression in transfected 293T cell line by SC65 monoclonal antibody (M01), clone 1E12.

Lane 1: SC65 transfected lysate (Predicted MW: 50.381 KDa).

Lane 2: Non-transfected lysate.

[Protocol Download](#)

- Western Blot (Recombinant protein)

[Protocol Download](#)

- ELISA

Gene Info — SC65

Entrez GeneID	10609
GeneBank Accession#	NM_006455
Protein Accession#	NP_006446
Gene Name	SC65
Gene Alias	NOL55
Gene Description	synaptonemal complex protein SC65
Gene Ontology	Hyperlink

Gene Summary

This nucleolar protein was first characterized because it was an autoantigen in cases on interstitial cystitis. The protein, with a predicted molecular weight of 50 kDa, appears to be localized in the particulate compartment of the interphase nucleolus, with a distribution distinct from that of nucleolar protein B23. During mitosis it is associated with chromosomes. [provided by RefSeq]

Other Designations

OTTHUMP00000164758|nucleolar autoantigen No55|nucleolar autoantigen, 55kDa