

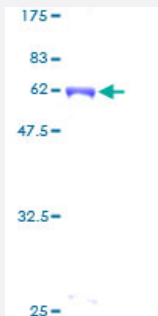
Full-Length

CDC42EP3 (Human) Recombinant Protein (P01)

Catalog # H00010602-P01

Size 25 ug, 10 ug

Applications



Specification

Product Description	Human CDC42EP3 full-length ORF (AAH19270, 1 a.a. - 254 a.a.) recombinant protein with GST-tag at N-terminal.
Sequence	MPAKTPMLKAANNKKGKKFKLRDILSPDMISPPLGDFRHTIHIGKEGQHDVFGDISFLQGN YELLPG NQEKAHLGQFPGHNEFFRANSTSDSVFTETPSPVLKNAISLPTIGGSQALMLPLLSPVTFNSKQES FGPAKLPRLSCEPVME EKAQEKS SLL ENGT VH QGDT SWGSSGSASQSSQGRDSHSSSLSEQY PDWPAEDMFDHPTPC ELIKGKTKSEESLSDLTGSLLSLQLDLGPSLLDEV LNVMDKNK
Host	Wheat Germ (in vitro)
Theoretical MW (kDa)	53.68
Interspecies Antigen Sequence	Mouse (92); Rat (94)
Preparation Method	in vitro wheat germ expression system
Purification	Glutathione Sepharose 4 Fast Flow
Quality Control Testing	12.5% SDS-PAGE Stained with Coomassie Blue.
Storage Buffer	50 mM Tris-HCl, 10 mM reduced Glutathione, pH=8.0 in the elution buffer.
Storage Instruction	Store at -80°C. Aliquot to avoid repeated freezing and thawing.

Note

Best use within three months from the date of receipt of this protein.

Applications

- Enzyme-linked Immunoabsorbent Assay
- Western Blot (Recombinant protein)
- Antibody Production
- Protein Array

Gene Info — CDC42EP3

Entrez GeneID [10602](#)

GeneBank Accession# [BC019270](#)

Protein Accession# [AAH19270](#)

Gene Name CDC42EP3

Gene Alias BORG2, CEP3, FLJ46903, UB1

Gene Description CDC42 effector protein (Rho GTPase binding) 3

Omim ID [606133](#)

Gene Ontology [Hyperlink](#)

Gene Summary CDC42, a small Rho GTPase, regulates the formation of F-actin-containing structures through its interaction with the downstream effector proteins. The protein encoded by this gene is a member of the Borg family of CDC42 effector proteins. Borg family proteins contain a CRIB (Cdc42/Rac interactive-binding) domain. They bind to, and negatively regulate the function of, CDC42. This protein can interact with CDC42, as well as with the ras homolog gene family, member Q (ARHQ/TC10). Expression of this protein in fibroblasts has been shown to induce pseudopodia formation. [provided by RefSeq]

Other Designations CRIB-containing BORG2 protein|Cdc42 effector protein 3|MSE55-related protein