

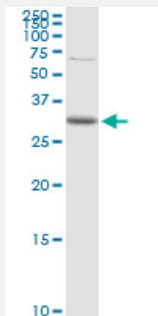
MaxPab®

CDC42EP3 purified MaxPab rabbit polyclonal antibody (D01P)

Catalog # H00010602-D01P

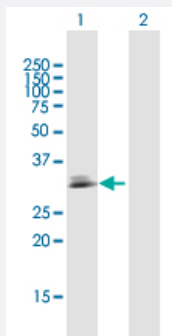
Size 100 ug

Applications



Western Blot (Cell lysate)

CDC42EP3 MaxPab rabbit polyclonal antibody. Western Blot analysis of CDC42EP3 expression in A-431.



Western Blot (Transfected lysate)

Western Blot analysis of CDC42EP3 expression in transfected 293T cell line ([H00010602-T02](#)) by CDC42EP3 MaxPab polyclonal antibody.

Lane 1: CDC42EP3 transfected lysate(27.70 KDa).

Lane 2: Non-transfected lysate.

Specification

Product Description	Rabbit polyclonal antibody raised against a full-length human CDC42EP3 protein.
Immunogen	CDC42EP3 (NP_006440.2, 1 a.a. ~ 254 a.a) full-length human protein.
Sequence	MPAKTPMLKAANNKKGKKFKLRDILSPDMISPPLGDFRHTIHIGKEGQHDVFGDISFLQGN YELLPG NQEKAHLGQFPGHNEFFRANSTSDSVFTETPSPVLKNAISLPTIGGSQALMLPLLSPVTFNSKQES FGPAKLPRLSCEPVMEEKAQEKSLLLENGTVHQGDTSWGSSGSASQSSQGRDSHSSSLSEQY PDWPAEDMFDHPTPCELIKGKTKSEESLSDLTGSLLSLQLDLGPSLLDEVLNVM DKNK
Host	Rabbit
Reactivity	Human

Interspecies Antigen Sequence	Mouse (92); Rat (94)
Quality Control Testing	Antibody reactive against mammalian transfected lysate.
Storage Buffer	In 1x PBS, pH 7.4
Storage Instruction	Store at -20°C or lower. Aliquot to avoid repeated freezing and thawing.

Applications

- Western Blot (Cell lysate)

CDC42EP3 MaxPab rabbit polyclonal antibody. Western Blot analysis of CDC42EP3 expression in A-431.

[Protocol Download](#)

- Western Blot (Transfected lysate)

Western Blot analysis of CDC42EP3 expression in transfected 293T cell line ([H00010602-T02](#)) by CDC42EP3 MaxPab polyclonal antibody.

Lane 1: CDC42EP3 transfected lysate(27.70 KDa).

Lane 2: Non-transfected lysate.

[Protocol Download](#)

Gene Info — CDC42EP3

Entrez GeneID	10602
GeneBank Accession#	NM_006449.3
Protein Accession#	NP_006440.2
Gene Name	CDC42EP3
Gene Alias	BORG2, CEP3, FLJ46903, UB1
Gene Description	CDC42 effector protein (Rho GTPase binding) 3
Omim ID	606133
Gene Ontology	Hyperlink

Gene Summary

CDC42, a small Rho GTPase, regulates the formation of F-actin-containing structures through its interaction with the downstream effector proteins. The protein encoded by this gene is a member of the Borg family of CDC42 effector proteins. Borg family proteins contain a CRIB (Cdc42/Rac interactive-binding) domain. They bind to, and negatively regulate the function of, CDC42. This protein can interact with CDC42, as well as with the ras homolog gene family, member Q (ARHQ/TC10). Expression of this protein in fibroblasts has been shown to induce pseudopodia formation. [provided by RefSeq]

Other Designations

CRIB-containing BORG2 protein|Cdc42 effector protein 3|MSE55-related protein