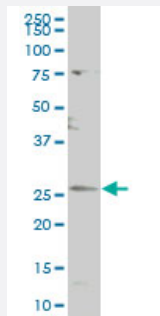


CDC42EP3 polyclonal antibody (A01)

Catalog # H00010602-A01

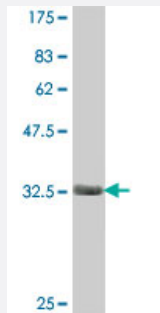
Size 50 uL

Applications



Western Blot (Cell lysate)

CDC42EP3 polyclonal antibody (A01), Lot # 060509JCS1 Western Blot analysis of CDC42EP3 expression in K-562 (Cat # L009V1).



Western Blot detection against Immunogen (33.48 KDa) .

Specification

Product Description	Mouse polyclonal antibody raised against a partial recombinant CDC42EP3.
Immunogen	CDC42EP3 (NP_006440, 42 a.a. ~ 108 a.a) partial recombinant protein with GST tag.
Sequence	IHIGKEGQHDVFGDISFLQGN YELLPGNQEK AHLGQFPGHNEFFRANSTSDSVFTETPSPVLKNAI S
Host	Mouse
Reactivity	Human
Interspecies Antigen Sequence	Mouse (92); Rat (94)

Quality Control Testing

Antibody Reactive Against Recombinant Protein.
Western Blot detection against Immunogen (33.48 KDa) .

Storage Buffer

50 % glycerol

Storage Instruction

Store at -20°C or lower. Aliquot to avoid repeated freezing and thawing.

Applications

- Western Blot (Cell lysate)

CDC42EP3 polyclonal antibody (A01), Lot # 060509JCS1 Western Blot analysis of CDC42EP3 expression in K-562 (Cat # L009V1).

[Protocol Download](#)

- Western Blot (Recombinant protein)

[Protocol Download](#)

- ELISA

Gene Info — CDC42EP3

Entrez GeneID

[10602](#)

GeneBank Accession#

[NM_006449](#)

Protein Accession#

[NP_006440](#)

Gene Name

CDC42EP3

Gene Alias

BORG2, CEP3, FLJ46903, UB1

Gene Description

CDC42 effector protein (Rho GTPase binding) 3

Omim ID

[606133](#)

Gene Ontology

[Hyperlink](#)

Gene Summary

CDC42, a small Rho GTPase, regulates the formation of F-actin-containing structures through its interaction with the downstream effector proteins. The protein encoded by this gene is a member of the Borg family of CDC42 effector proteins. Borg family proteins contain a CRIB (Cdc42/Rac interactive-binding) domain. They bind to, and negatively regulate the function of, CDC42. This protein can interact with CDC42, as well as with the ras homolog gene family, member Q (ARHQ/TC10). Expression of this protein in fibroblasts has been shown to induce pseudopodia formation. [provided by RefSeq]

Other Designations

CRIB-containing BORG2 protein|Cdc42 effector protein 3|MSE55-related protein

Publication Reference

- [Protein array analysis of oligomerization-induced changes in alpha-synuclein protein-protein interactions points to an interference with CDC42 effector proteins.](#)

Schnack C, Danzer KM, Hengeler B, Gillardon F.

Neuroscience 2008 Feb; 154(4):1450.

Application: WB, Mouse, Mouse brains