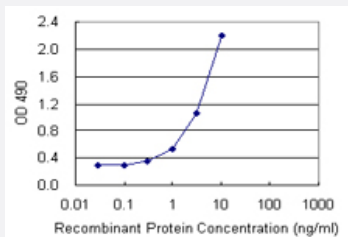


AHSA1 (Human) Matched Antibody Pair

Catalog # H00010598-AP22

Size 1 Set

Applications



Sandwich ELISA detection sensitivity ranging from 0.3 ng/ml to 100 ng/ml.

Specification

| | |
|--------------------------------------|--|
| Product Description | This antibody pair set comes with a matched antibody pair to detect and quantify the protein level of human AHSA1. |
| Reactivity | Human |
| Interspecies Antigen Sequence | Mouse (94); Rat (94) |
| Quality Control Testing | Standard curve using recombinant protein (H00010598-P01) as an analyte. Sandwich ELISA detection sensitivity ranging from 0.3 ng/ml to 100 ng/ml. |
| Supplied Product | Antibody pair set content: 1. Capture antibody: rabbit MaxPab® affinity purified polyclonal anti-AHSA1 (100 ug) 2. Detection antibody: mouse purified polyclonal anti-AHSA1 (20 ug) *Reagents are sufficient for at least 1-2 x 96 well plates using recommended protocols. |
| Storage Instruction | Store reagents of the antibody pair set at -20°C or lower. Please aliquot to avoid repeated freeze thaw cycle. Reagents should be returned to -20°C storage immediately after use. |

Applications

- ELISA Pair (Recombinant protein)

[Protocol Download](#)

Gene Info — AHSA1

| | |
|--------------------|--|
| Entrez GeneID | 10598 |
| Gene Name | AHSA1 |
| Gene Alias | AHA1, C14orf3, p38 |
| Gene Description | AHA1, activator of heat shock 90kDa protein ATPase homolog 1 (yeast) |
| Omim ID | 608466 |
| Gene Ontology | Hyperlink |
| Gene Summary | O |
| Other Designations | AHA1, activator of heat shock 90kDa protein ATPase homolog 1 |