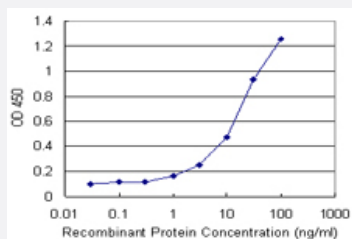


SCGN (Human) Matched Antibody Pair

Catalog # H00010590-AP21 Size 1 Set

Applications



Sandwich ELISA detection sensitivity ranging from 3 ng/ml to 100 ng/ml.

Specification

Product Description	This antibody pair set comes with a matched antibody pair to detect and quantify the protein level of human SCGN.
Reactivity	Human
Interspecies Antigen Sequence	Mouse (84); Rat (83)
Quality Control Testing	Standard curve using recombinant protein (H00010590-P01) as an analyte. Sandwich ELISA detection sensitivity ranging from 3 ng/ml to 100 ng/ml.
Supplied Product	Antibody pair set content: 1. Capture antibody: rabbit MaxPab® affinity purified polyclonal anti-SCGN (100 ug) 2. Detection antibody: mouse purified polyclonal anti-SCGN (20 ug) *Reagents are sufficient for at least 1-2 x 96 well plates using recommended protocols.
Storage Instruction	Store reagents of the antibody pair set at -20°C or lower. Please aliquot to avoid repeated freeze thaw cycle. Reagents should be returned to -20°C storage immediately after use.

Applications

- ELISA Pair (Recombinant protein)

[Protocol Download](#)

Gene Info — SCGN

Entrez GeneID	10590
---------------	-----------------------

Gene Name	SCGN
-----------	------

Gene Alias	CALBL, DJ501N12.8, SECRET, SEGN, setagin
------------	------------------------------------------

Gene Description	secretagogen, EF-hand calcium binding protein
------------------	-----------------------------------------------

Omim ID	609202
---------	------------------------

Gene Ontology	Hyperlink
---------------	---------------------------

Gene Summary	The encoded protein is a secreted calcium-binding protein which is found in the cytoplasm. It is related to calbindin D-28K and calretinin. This protein is thought to be involved in KCL-stimulated calcium flux and cell proliferation. [provided by RefSeq]
--------------	----------------------------------------------------------------------------------------------------------------------------------------------------------------------------------------------------------------------------------------------------------------

Other Designations	OTTHUMP00000016124 calbindin-like secretagogen
--------------------	------------------------------------------------