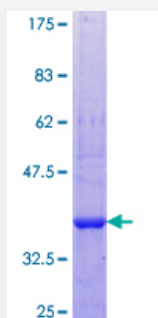


COLEC10 (Human) Recombinant Protein (Q01)

Catalog # H00010584-Q01

Size 25 ug, 10 ug

Applications



Specification

Product Description	Human COLEC10 partial ORF (NP_006429.1, 121 a.a. - 229 a.a.) recombinant protein with GST-tag at N-terminal.
Sequence	CGRYRKFGQLDISIARLKTSMKFVKNIAGIRETEEFYIVQEEKNYRESLTHCRIRGGMLAMPKD EAANTLIADYVAKSGFFRVFIGVNDLEREGQYMFTDNTPLQ
Host	Wheat Germ (in vitro)
Theoretical MW (kDa)	37.73
Interspecies Antigen Sequence	Mouse (88); Rat (88)
Preparation Method	in vitro wheat germ expression system
Purification	Glutathione Sepharose 4 Fast Flow
Quality Control Testing	12.5% SDS-PAGE Stained with Coomassie Blue.
Storage Buffer	50 mM Tris-HCl, 10 mM reduced Glutathione, pH=8.0 in the elution buffer.
Storage Instruction	Store at -80°C. Aliquot to avoid repeated freezing and thawing.
Note	Best use within three months from the date of receipt of this protein.

Applications

- Enzyme-linked Immunoabsorbent Assay
- Western Blot (Recombinant protein)
- Antibody Production
- Protein Array

Gene Info — COLEC10

Entrez GeneID [10584](#)

GeneBank Accession# [NM_006438](#)

Protein Accession# [NP_006429.1](#)

Gene Name COLEC10

Gene Alias CLL1, MGC118794, MGC118795

Gene Description collectin sub-family member 10 (C-type lectin)

Omim ID [607620](#)

Gene Ontology [Hyperlink](#)

Gene Summary This gene encodes a member of the C-lectin family, proteins that possess collagen-like sequence s and carbohydrate recognition domains. The other members of this family are secreted proteins and bind to carbohydrate antigens on microorganisms facilitating their recognition and removal. T his gene product is a cytosolic protein, a characteristic that suggests that it may have different biological functions than other C-lectins. [provided by RefSeq]

Other Designations collectin 34|collectin liver 1|collectin sub-family member 10