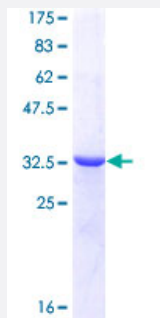


CCT4 (Human) Recombinant Protein (Q01)

Catalog # H00010575-Q01

Size 25 ug, 10 ug

Applications



Specification

Product Description	Human CCT4 partial ORF (NP_006421 , 306 a.a. - 408 a.a.) recombinant protein with GST-tag at N-terminal.
Sequence	RDALSDLALHFLNKMIMVIKDIEREDIEFICKTIGTKPVAHIDQFTADMLGSAELAAEEVNLNGSGKL LKITGCASPGKTVTVVRGSNKLVEEAERSIHDA
Host	Wheat Germ (in vitro)
Theoretical MW (kDa)	37.07
Interspecies Antigen Sequence	Mouse (96); Rat (96)
Preparation Method	in vitro wheat germ expression system
Purification	Glutathione Sepharose 4 Fast Flow
Quality Control Testing	12.5% SDS-PAGE Stained with Coomassie Blue.
Storage Buffer	50 mM Tris-HCl, 10 mM reduced Glutathione, pH=8.0 in the elution buffer.
Storage Instruction	Store at -80°C. Aliquot to avoid repeated freezing and thawing.
Note	Best use within three months from the date of receipt of this protein.

Applications

- Enzyme-linked Immunoabsorbent Assay
- Western Blot (Recombinant protein)
- Antibody Production
- Protein Array

Gene Info — CCT4

Entrez GeneID [10575](#)

GeneBank Accession# [NM_006430](#)

Protein Accession# [NP_006421](#)

Gene Name CCT4

Gene Alias CCT-DELTA, Cctd, MGC126164, MGC126165, SRB

Gene Description chaperonin containing TCP1, subunit 4 (delta)

Omim ID [605142](#)

Gene Ontology [Hyperlink](#)

Gene Summary The chaperonin containing TCP1 (MIM 186980) complex (CCT), also called the TCP1 ring complex, consists of 2 back-to-back rings, each containing 8 unique but homologous subunits, such as CCT4. CCT assists the folding of newly translated polypeptide substrates through multiple rounds of ATP-driven release and rebinding of partially folded intermediate forms. Substrates of CCT include the cytoskeletal proteins actin (see MIM 102560) and tubulin (see MIM 191130), as well as alpha-transducin (MIM 139330) (Won et al., 1998 [PubMed 9819444]).[supplied by OMIM]

Other Designations chaperonin containing t-complex polypeptide 1, delta subunit