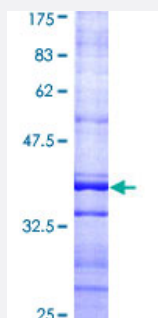


# CCT7 (Human) Recombinant Protein (Q01)

Catalog # H00010574-Q01

Size 25 ug, 10 ug

## Applications



## Specification

Product Description	Human CCT7 partial ORF ( AAH19296, 425 a.a. - 528 a.a.) recombinant protein with GST-tag at N-terminal.
Sequence	RTIPGKQQLLIGAYAKALEIIPRQLCDNAGFDATNILNKLRRARHAQGGTWYGVDDINNEADIADNFEAFV WEPAMVRINALTAASEAACLVSVDETIKNPRSTVD
Host	Wheat Germ (in vitro)
Theoretical MW (kDa)	37.07
Interspecies Antigen Sequence	Mouse (95); Rat (96)
Preparation Method	<a href="#">in vitro wheat germ expression system</a>
Purification	Glutathione Sepharose 4 Fast Flow
Quality Control Testing	12.5% SDS-PAGE Stained with Coomassie Blue.
Storage Buffer	50 mM Tris-HCl, 10 mM reduced Glutathione, pH=8.0 in the elution buffer.
Storage Instruction	Store at -80°C. Aliquot to avoid repeated freezing and thawing.
Note	Best use within three months from the date of receipt of this protein.

## Applications

- Enzyme-linked Immunoabsorbent Assay
- Western Blot (Recombinant protein)
- Antibody Production
- Protein Array

## Gene Info — CCT7

Entrez GeneID [10574](#)

GeneBank Accession# [BC019296](#)

Protein Accession# [AAH19296](#)

Gene Name CCT7

Gene Alias CCT-ETA, Ccth, MGC110985, Nip7-1, TCP-1-eta

Gene Description chaperonin containing TCP1, subunit 7 (eta)

Omim ID [605140](#)

Gene Ontology [Hyperlink](#)

**Gene Summary** This gene encodes a molecular chaperone that is a member of the chaperonin containing TCP1 complex (CCT), also known as the TCP1 ring complex (TRiC). This complex consists of two identical stacked rings, each containing eight different proteins. Unfolded polypeptides enter the central cavity of the complex and are folded in an ATP-dependent manner. The complex folds various proteins, including actin and tubulin. Alternate transcriptional splice variants encoding different isoforms have been found for this gene, but only two of them have been characterized to date. [provided by RefSeq]

**Other Designations** HIV-1 Nef interacting protein|T-complex protein 1, eta subunit|chaperonin containing TCP1, subunit 7|chaperonin containing t-complex polypeptide 1, eta subunit