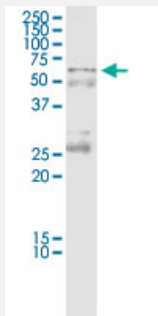


CCT7 (Human) IP-WB Antibody Pair

Catalog # H00010574-PW2

Size 1 Set

Applications



Immunoprecipitation of CCT7 transfected lysate using rabbit polyclonal anti-CCT7 and Protein A Magnetic Bead ([U0007](#)), and immunoblotted with mouse purified polyclonal anti-CCT7.

Specification

| | |
|--------------------------------------|---|
| Product Description | This IP-WB antibody pair set comes with one antibody for immunoprecipitation and another to detect the precipitated protein in western blot. |
| Reactivity | Human |
| Interspecies Antigen Sequence | Mouse (95); Rat (96) |
| Quality Control Testing | Immunoprecipitation-Western Blot (IP-WB) Immunoprecipitation of CCT7 transfected lysate using rabbit polyclonal anti-CCT7 and Protein A Magnetic Bead (U0007), and immunoblotted with mouse purified polyclonal anti-CCT7. |
| Supplied Product | Antibody pair set content: 1. Antibody pair for IP: rabbit polyclonal anti-CCT7 (300 ul) 2. Antibody pair for WB: mouse purified polyclonal anti-CCT7 (50 ug) |
| Storage Instruction | Store reagents of the antibody pair set at -20°C or lower. Please aliquot to avoid repeated freeze thaw cycle. Reagents should be returned to -20°C storage immediately after use. |

Applications

- Immunoprecipitation-Western Blot

[Protocol Download](#)

Gene Info — CCT7

Entrez GeneID [10574](#)

Gene Name CCT7

Gene Alias CCT-ETA, Ccth, MGC110985, Nip7-1, TCP-1-eta

Gene Description chaperonin containing TCP1, subunit 7 (eta)

Omim ID [605140](#)

Gene Ontology [Hyperlink](#)

Gene Summary This gene encodes a molecular chaperone that is a member of the chaperonin containing TCP1 complex (CCT), also known as the TCP1 ring complex (TRiC). This complex consists of two identical stacked rings, each containing eight different proteins. Unfolded polypeptides enter the central cavity of the complex and are folded in an ATP-dependent manner. The complex folds various proteins, including actin and tubulin. Alternate transcriptional splice variants encoding different isoforms have been found for this gene, but only two of them have been characterized to date. [provided by RefSeq]

Other Designations HIV-1 Nef interacting protein|T-complex protein 1, eta subunit|chaperonin containing TCP1, subunit 7|chaperonin containing t-complex polypeptide 1, eta subunit