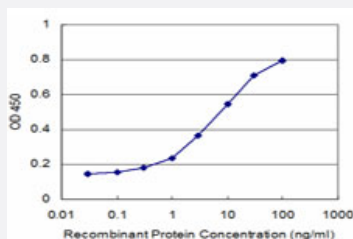


CCT7 monoclonal antibody (M02), clone 3A6

Catalog # H00010574-M02

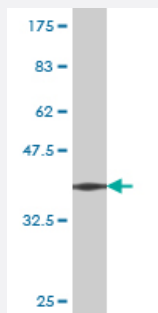
Size 100 ug

Applications



Sandwich ELISA (Recombinant protein)

Detection limit for recombinant GST tagged CCT7 is approximately 0.3ng/ml as a capture antibody.



Western Blot detection against Immunogen (37.07 KDa) .

Specification

Product Description	Mouse monoclonal antibody raised against a partial recombinant CCT7.
Immunogen	CCT7 (AAH19296, 425 a.a. ~ 528 a.a) partial recombinant protein with GST tag. MW of the GST tag alone is 26 KDa.
Sequence	RTIPGKQQLLIGAYAKALEIIPRQLCDNAGFDATNILNKLRRARHAQGGTWYGVDDINNEADIADNFV WEPAMVRINALTAASEAACLVSVDETIKNPRSTVD
Host	Mouse
Reactivity	Human

Interspecies Antigen Sequence	Mouse (95); Rat (96)
Isotype	IgG2a Kappa
Quality Control Testing	Antibody Reactive Against Recombinant Protein. Western Blot detection against Immunogen (37.07 KDa) .
Storage Buffer	In 1x PBS, pH 7.4
Storage Instruction	Store at -20°C or lower. Aliquot to avoid repeated freezing and thawing.

Applications

- Western Blot (Recombinant protein)

[Protocol Download](#)

- Sandwich ELISA (Recombinant protein)

Detection limit for recombinant GST tagged CCT7 is approximately 0.3ng/ml as a capture antibody.

[Protocol Download](#)

- ELISA

Gene Info — CCT7

Entrez GeneID	10574
GeneBank Accession#	BC019296
Protein Accession#	AAH19296
Gene Name	CCT7
Gene Alias	CCT-ETA, Ccth, MGC110985, Nip7-1, TCP-1-eta
Gene Description	chaperonin containing TCP1, subunit 7 (eta)
Omim ID	605140
Gene Ontology	Hyperlink

Gene Summary

This gene encodes a molecular chaperone that is a member of the chaperonin containing TCP1 complex (CCT), also known as the TCP1 ring complex (TRiC). This complex consists of two identical stacked rings, each containing eight different proteins. Unfolded polypeptides enter the central cavity of the complex and are folded in an ATP-dependent manner. The complex folds various proteins, including actin and tubulin. Alternate transcriptional splice variants encoding different isoforms have been found for this gene, but only two of them have been characterized to date. [provided by RefSeq]

Other Designations

HIV-1 Nef interacting protein|T-complex protein 1, eta subunit|chaperonin containing TCP1, subunit 7|chaperonin containing t-complex polypeptide 1, eta subunit

Publication Reference

- [Reconstitution of the human chaperonin CCT by co-expression of the eight distinct subunits in mammalian cells.](#)

Machida K, Masutani M, Kobayashi T, Mikami S, Nishino Y, Miyazawa A, Imataka H.

Protein Expression and Purification 2012 Mar; 82(1):61.

Application: WB, Hamster, Human, BHK-21, HeLa cells