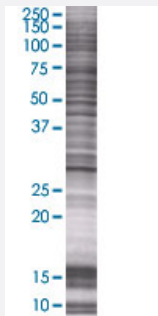


MRPL28 293T Cell Transient Overexpression Lysate(Denatured)

Catalog # H00010573-T02

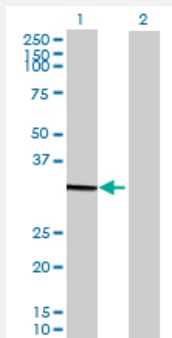
Size 100 uL

Applications



SDS-PAGE Gel

MRPL28 transfected lysate.



Western Blot

Lane 1: MRPL28 transfected lysate (28.27 KDa)

Lane 2: Non-transfected lysate.

Specification

Transfected Cell Line	293T
Plasmid	pCMV-MRPL28 full-length
Host	Human
Theoretical MW (kDa)	28.27
Interspecies Antigen Sequence	Mouse (85); Rat (84)

Quality Control Testing

Transient overexpression cell lysate was tested with Anti-MRPL28 antibody ([H00010573-B02](#)) by Western Blots.
SDS-PAGE Gel
MRPL28 transfected lysate.
Western Blot
Lane 1: MRPL28 transfected lysate (28.27 KDa)
Lane 2: Non-transfected lysate.

Storage Buffer

1X Sample Buffer (50 mM Tris-HCl, 2% SDS, 10% glycerol, 300 mM 2-mercaptoethanol, 0.01% Bromophenol blue)

Storage Instruction

Store at -80°C. Aliquot to avoid repeated freezing and thawing.

Applications

- Western Blot

Gene Info — MRPL28

Entrez GeneID [10573](#)

GeneBank Accession# [NM_006428.3](#)

Protein Accession# [NP_006419.2](#)

Gene Name MRPL28

Gene Alias MAAT1, MGC8499, p15

Gene Description mitochondrial ribosomal protein L28

Omim ID [604853](#)

Gene Ontology [Hyperlink](#)

Gene Summary

Mammalian mitochondrial ribosomal proteins are encoded by nuclear genes and help in protein synthesis within the mitochondrion. Mitochondrial ribosomes (mitoribosomes) consist of a small 28 S subunit and a large 39S subunit. They have an estimated 75% protein to rRNA composition compared to prokaryotic ribosomes, where this ratio is reversed. Another difference between mammalian mitoribosomes and prokaryotic ribosomes is that the latter contain a 5S rRNA. Among different species, the proteins comprising the mitoribosome differ greatly in sequence, and sometimes in biochemical properties, which prevents easy recognition by sequence homology. This gene encodes a 39S subunit protein, a part of which was originally isolated by its ability to recognize tyrosinase in an HLA-A24-restricted fashion. [provided by RefSeq]

Other Designations

OTTHUMP00000067337|melanoma antigen p15|melanoma-associated antigen recognised by cytotoxic T lymphocytes
