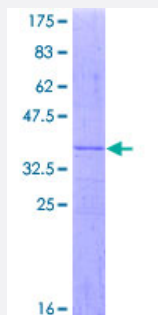


# MRPL28 (Human) Recombinant Protein (Q01)

Catalog # H00010573-Q01

Size 10 ug, 25 ug

## Applications



## Specification

<b>Product Description</b>	Human MRPL28 partial ORF ( NP_006419, 1 a.a. - 99 a.a.) recombinant protein with GST-tag at N-terminal.
<b>Sequence</b>	MPLHKYPVWLWKRLQLREGICSRLPGHYLRSLLEEERTPTPVHYRPHGAKFKINPKNGQRERVEDV PIPIYFPESQRGLWGGEWILGQIYANNDKLSK
<b>Host</b>	Wheat Germ (in vitro)
<b>Theoretical MW (kDa)</b>	36.63
<b>Interspecies Antigen Sequence</b>	Mouse (85); Rat (84)
<b>Preparation Method</b>	<a href="#">in vitro wheat germ expression system</a>
<b>Purification</b>	Glutathione Sepharose 4 Fast Flow
<b>Quality Control Testing</b>	12.5% SDS-PAGE Stained with Coomassie Blue.
<b>Storage Buffer</b>	50 mM Tris-HCl, 10 mM reduced Glutathione, pH=8.0 in the elution buffer.
<b>Storage Instruction</b>	Store at -80°C. Aliquot to avoid repeated freezing and thawing.
<b>Note</b>	Best use within three months from the date of receipt of this protein.

## Applications

- Enzyme-linked Immunoabsorbent Assay
- Western Blot (Recombinant protein)
- Antibody Production
- Protein Array

## Gene Info — MRPL28

Entrez GeneID [10573](#)

GeneBank Accession# [NM\\_006428](#)

Protein Accession# [NP\\_006419](#)

Gene Name MRPL28

Gene Alias MAAT1, MGC8499, p15

Gene Description mitochondrial ribosomal protein L28

Omim ID [604853](#)

Gene Ontology [Hyperlink](#)

**Gene Summary** Mammalian mitochondrial ribosomal proteins are encoded by nuclear genes and help in protein synthesis within the mitochondrion. Mitochondrial ribosomes (mitoribosomes) consist of a small 28 S subunit and a large 39S subunit. They have an estimated 75% protein to rRNA composition compared to prokaryotic ribosomes, where this ratio is reversed. Another difference between mammalian mitoribosomes and prokaryotic ribosomes is that the latter contain a 5S rRNA. Among different species, the proteins comprising the mitoribosome differ greatly in sequence, and sometimes in biochemical properties, which prevents easy recognition by sequence homology. This gene encodes a 39S subunit protein, a part of which was originally isolated by its ability to recognize tyrosinase in an HLA-A24-restricted fashion. [provided by RefSeq]

**Other Designations** OTTHUMP00000067337|melanoma antigen p15|melanoma-associated antigen recognised by cytotoxic T lymphocytes