

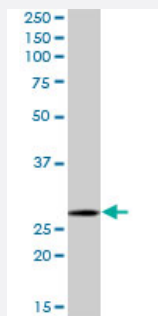
MaxPab®

MRPL28 purified MaxPab mouse polyclonal antibody (B02P)

Catalog # H00010573-B02P

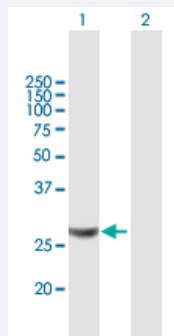
Size 50 ug

Applications



Western Blot (Tissue lysate)

MRPL28 MaxPab polyclonal antibody. Western Blot analysis of MRPL28 expression in human placenta.



Western Blot (Transfected lysate)

Western Blot analysis of MRPL28 expression in transfected 293T cell line ([H00010573-T02](#)) by MRPL28 MaxPab polyclonal antibody.

Lane 1: MRPL28 transfected lysate(28.16 KDa).

Lane 2: Non-transfected lysate.

Specification

Product Description

Mouse polyclonal antibody raised against a full-length human MRPL28 protein.

Immunogen

MRPL28 (NP_006419.2, 1 a.a. ~ 256 a.a) full-length human protein.

Sequence

MPLHKYPVWLWKRLQLREGICSRLPGHYLRSLLEEERTPTPVHYRPHGAKFKINPKNGQRERVEDV
PIPIYFPPESSQRGLWGGEGLWLGQIYANNDKLSKRLLKVVWKPQLFEREFYSEILDKKFTVTVTMRTL
DLIDEAYGLDFYILKTPKEDLCSKFGMDLKRGMILLRLARQDPQLHPEDPERRAAIYDKYKEFAIPEE
EAEWVGLTLEEAIIEKQRLLEEKDPVPLFKIYVAELIQQLQQQALSEPAVVQKRASGQ

Host

Mouse

Reactivity

Human

| | |
|-------------------------------|--|
| Interspecies Antigen Sequence | Mouse (85); Rat (84) |
| Quality Control Testing | Antibody reactive against mammalian transfected lysate. |
| Storage Buffer | In 1x PBS, pH 7.4 |
| Storage Instruction | Store at -20°C or lower. Aliquot to avoid repeated freezing and thawing. |

Applications

- Western Blot (Tissue lysate)

MRPL28 MaxPab polyclonal antibody. Western Blot analysis of MRPL28 expression in human placenta.

[Protocol Download](#)

- Western Blot (Transfected lysate)

Western Blot analysis of MRPL28 expression in transfected 293T cell line ([H00010573-T02](#)) by MRPL28 MaxPab polyclonal antibody.

Lane 1: MRPL28 transfected lysate(28.16 KDa).

Lane 2: Non-transfected lysate.

[Protocol Download](#)

Gene Info — MRPL28

| | |
|---------------------|-------------------------------------|
| Entrez GeneID | 10573 |
| GeneBank Accession# | NM_006428.3 |
| Protein Accession# | NP_006419.2 |
| Gene Name | MRPL28 |
| Gene Alias | MAAT1, MGC8499, p15 |
| Gene Description | mitochondrial ribosomal protein L28 |
| Omim ID | 604853 |
| Gene Ontology | Hyperlink |

Gene Summary

Mammalian mitochondrial ribosomal proteins are encoded by nuclear genes and help in protein synthesis within the mitochondrion. Mitochondrial ribosomes (mitoribosomes) consist of a small 28S subunit and a large 39S subunit. They have an estimated 75% protein to rRNA composition compared to prokaryotic ribosomes, where this ratio is reversed. Another difference between mammalian mitoribosomes and prokaryotic ribosomes is that the latter contain a 5S rRNA. Among different species, the proteins comprising the mitoribosome differ greatly in sequence, and sometimes in biochemical properties, which prevents easy recognition by sequence homology. This gene encodes a 39S subunit protein, a part of which was originally isolated by its ability to recognize tyrosinase in an HLA-A24-restricted fashion. [provided by RefSeq]

Other Designations

OTTHUMP00000067337|melanoma antigen p15|melanoma-associated antigen recognised by cytotoxic T lymphocytes