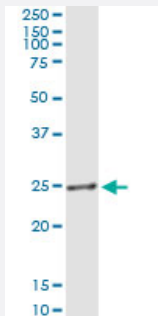


# AGPAT1 (Human) IP-WB Antibody Pair

Catalog # H00010554-PW1

Size 1 Set

## Applications



Immunoprecipitation of AGPAT1 transfected lysate using rabbit polyclonal anti-AGPAT1 and Protein A Magnetic Bead ([U0007](#)), and immunoblotted with mouse purified polyclonal anti-AGPAT1.

## Specification

<b>Product Description</b>	This IP-WB antibody pair set comes with one antibody for immunoprecipitation and another to detect the precipitated protein in western blot.
<b>Reactivity</b>	Human
<b>Interspecies Antigen Sequence</b>	Mouse (91); Rat (92)
<b>Quality Control Testing</b>	Immunoprecipitation-Western Blot (IP-WB) Immunoprecipitation of AGPAT1 transfected lysate using rabbit polyclonal anti-AGPAT1 and Protein A Magnetic Bead ( <a href="#">U0007</a> ), and immunoblotted with mouse purified polyclonal anti-AGPAT1.
<b>Supplied Product</b>	Antibody pair set content: 1. Antibody pair for IP: rabbit polyclonal anti-AGPAT1 (300 ul) 2. Antibody pair for WB: mouse purified polyclonal anti-AGPAT1 (50 ug)
<b>Storage Instruction</b>	Store reagents of the antibody pair set at -20°C or lower. Please aliquot to avoid repeated freeze thaw cycle. Reagents should be returned to -20°C storage immediately after use.

## Applications

- Immunoprecipitation-Western Blot

[Protocol Download](#)

## Gene Info — AGPAT1

**Entrez GeneID** [10554](#)

**Gene Name** AGPAT1

**Gene Alias** 1-AGPAT1, G15, LPAAT-alpha, LPAATA, MGC4007, MGC5423

**Gene Description** 1-acylglycerol-3-phosphate O-acyltransferase 1 (lysophosphatidic acid acyltransferase, alpha)

**Omim ID** [603099](#)

**Gene Ontology** [Hyperlink](#)

**Gene Summary** This gene encodes an enzyme that converts lysophosphatidic acid (LPA) into phosphatidic acid (PA). LPA and PA are two phospholipids involved in signal transduction and in lipid biosynthesis in cells. This enzyme localizes to the endoplasmic reticulum. This gene is located in the class III region of the human major histocompatibility complex. Alternative splicing results in two transcript variants encoding the same protein. [provided by RefSeq]

**Other Designations** 1-AGP acyltransferase 1|1-acylglycerol-3-phosphate O-acyltransferase 1|1-acylglycerol-3-phosphate O-acyltransferase 1 (acetoacetyl Coenzyme A thiolase)|OTTHUMP00000029298|OTTHUMP00000029299|OTTHUMP00000029300|OTTHUMP00000029301|OTTHUMP00000029302|OTTHUMP0

## Pathway

- [Ether lipid metabolism](#)
- [Glycerolipid metabolism](#)
- [Glycerophospholipid metabolism](#)
- [Metabolic pathways](#)

## Disease

- [Diabetes Mellitus](#)
- [Genetic Predisposition to Disease](#)

- [Lupus Erythematosus](#)
- [Obesity](#)