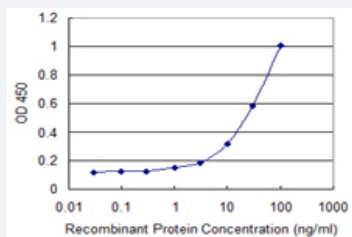


PRDX4 monoclonal antibody (M03), clone 4C3

Catalog # H00010549-M03

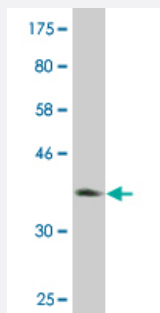
Size 100 ug

Applications



Sandwich ELISA (Recombinant protein)

Detection limit for recombinant GST tagged PRDX4 is 0.3 ng/ml as a capture antibody.



Western Blot detection against Immunogen (36.74 KDa) .

Specification

Product Description	Mouse monoclonal antibody raised against a partial recombinant PRDX4.
Immunogen	PRDX4 (AAH03609, 51 a.a. ~ 150 a.a) partial recombinant protein with GST tag. MW of the GST tag alone is 26 KDa.
Sequence	CHFFAGGQVYPGEASRVSVADHSLHLSKAKISKAPYWEGTAVIDGEFKELKLTDIRGKYLVFFF YPLDFTFVCPTEIIAFGDRLEEFRSINTEVVACSV
Host	Mouse
Reactivity	Human

Interspecies Antigen Sequence	Mouse (89); Rat (90)
Isotype	IgG1 Kappa
Quality Control Testing	Antibody Reactive Against Recombinant Protein. Western Blot detection against Immunogen (36.74 KDa) .
Storage Buffer	In 1x PBS, pH 7.4
Storage Instruction	Store at -20°C or lower. Aliquot to avoid repeated freezing and thawing.

Applications

- Western Blot (Recombinant protein)

[Protocol Download](#)

- Sandwich ELISA (Recombinant protein)

Detection limit for recombinant GST tagged PRDX4 is 0.3 ng/ml as a capture antibody.

[Protocol Download](#)

- ELISA

Gene Info — PRDX4

Entrez GeneID	10549
GeneBank Accession#	BC003609
Protein Accession#	AAH03609
Gene Name	PRDX4
Gene Alias	AOE37-2, PRX-4
Gene Description	peroxiredoxin 4
Omim ID	606506
Gene Ontology	Hyperlink

Gene Summary

The protein encoded by this gene is an antioxidant enzyme and belongs to the peroxiredoxin family. The protein is localized to the cytoplasm. Peroxidases of the peroxiredoxin family reduce hydrogen peroxide and alkyl hydroperoxides to water and alcohol with the use of reducing equivalents derived from thiol-containing donor molecules. This protein has been found to play a regulatory role in the activation of the transcription factor NF-kappaB. [provided by RefSeq]

Other Designations

OTTHUMP00000023056|thioredoxin peroxidase|thioredoxin peroxidase (antioxidant enzyme)

Disease

- [Alzheimer disease](#)
- [Cognition](#)