

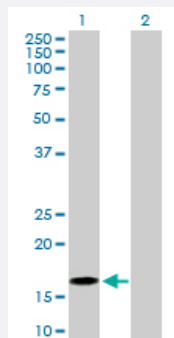
MaxPab®

BATF purified MaxPab rabbit polyclonal antibody (D01P)

Catalog # H00010538-D01P

Size 100 ug

Applications



Western Blot (Transfected lysate)

Western Blot analysis of BATF expression in transfected 293T cell line ([H00010538-T02](#)) by BATF MaxPab polyclonal antibody.

Lane 1: BATF transfected lysate(14.10 KDa).

Lane 2: Non-transfected lysate.

Specification

Product Description	Rabbit polyclonal antibody raised against a full-length human BATF protein.
Immunogen	BATF (NP_006390.1, 1 a.a. ~ 125 a.a) full-length human protein.
Sequence	MPHSSDSSDSSFSRPPPGKQDSSDDVRRVQRREKNRIAAQKSRQRQTQKADTLHLESEDEKQNAALRKEIKQLTEELKYFTSVLNSHEPLCSVLAASTPSPPEVVYSAHAFHQPHVSSPRFQP
Host	Rabbit
Reactivity	Human
Interspecies Antigen Sequence	Mouse (96); Rat (96)
Quality Control Testing	Antibody reactive against mammalian transfected lysate.
Storage Buffer	In 1x PBS, pH 7.4
Storage Instruction	Store at -20°C or lower. Aliquot to avoid repeated freezing and thawing.

Applications

- Western Blot (Transfected lysate)

Western Blot analysis of BATF expression in transfected 293T cell line ([H00010538-T02](#)) by BATF MaxPab polyclonal antibody.

Lane 1: BATF transfected lysate(14.10 KDa).

Lane 2: Non-transfected lysate.

[Protocol Download](#)

Gene Info — BATF

Entrez GeneID [10538](#)

GeneBank Accession# [NM_006399.2](#)

Protein Accession# [NP_006390.1](#)

Gene Name BATF

Gene Alias B-ATF, BATF1, SFA-2, SFA2

Gene Description basic leucine zipper transcription factor, ATF-like

Gene Ontology [Hyperlink](#)

Gene Summary The protein encoded by this gene is a nuclear basic leucine zipper protein that belongs to the AP-1/ATF superfamily of transcription factors. The leucine zipper of this protein mediates dimerization with members of the Jun family of proteins. This protein is thought to be a negative regulator of AP-1/ATF transcriptional events. [provided by RefSeq]

Other Designations SF-HT-activated gene 2|activating transcription factor B