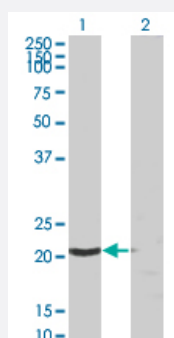


SSSCA1 monoclonal antibody (M03), clone 2H4

Catalog # H00010534-M03

Size 100 ug

Applications

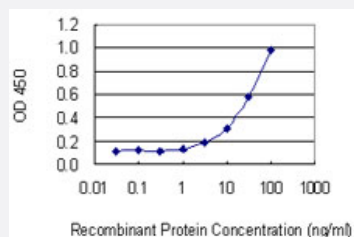


Western Blot (Transfected lysate)

Western Blot analysis of SSSCA1 expression in transfected 293T cell line by SSSCA1 monoclonal antibody (M03), clone 2H4.

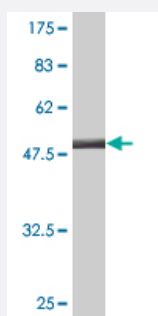
Lane 1: SSSCA1 transfected lysate (21.474 KDa).

Lane 2: Non-transfected lysate.



Sandwich ELISA (Recombinant protein)

Detection limit for recombinant GST tagged SSSCA1 is 1 ng/ml as a capture antibody.



Western Blot detection against Immunogen (47.63 KDa) .

Specification

Product Description

Mouse monoclonal antibody raised against a full-length recombinant SSSCA1.

Immunogen	SSSCA1 (AAH14791.1, 1 a.a. ~ 199 a.a) full-length recombinant protein with GST tag. MW of the GST tag alone is 26 KDa.
Sequence	MALNGAEVDDFSWEPPTAEATKVLQARRERQDRISRLMGDYLLRGYRVLGETCADCGTILLQDK QRKIYCVACQELDSDVDKDNPALNAQAALSQAREHQLASASELPLGSRPAPQPPVPRPEHCEG AAAGLKAAQGPPAPAVPPNTDVMACQTQTALLQKLTWASAE LGSSTSLETSIQLCGLIRACAEALR SLQQLQH
Host	Mouse
Reactivity	Human
Interspecies Antigen Sequence	Mouse (89); Rat (89)
Isotype	IgG2b Kappa
Quality Control Testing	Antibody Reactive Against Recombinant Protein. Western Blot detection against Immunogen (47.63 KDa) .
Storage Buffer	In 1x PBS, pH 7.4
Storage Instruction	Store at -20°C or lower. Aliquot to avoid repeated freezing and thawing.

Applications

- Western Blot (Transfected lysate)

Western Blot analysis of SSSCA1 expression in transfected 293T cell line by SSSCA1 monoclonal antibody (M03), clone 2H4.

Lane 1: SSSCA1 transfected lysate(21.474 KDa).

Lane 2: Non-transfected lysate.

[Protocol Download](#)

- Western Blot (Recombinant protein)

[Protocol Download](#)

- Sandwich ELISA (Recombinant protein)

Detection limit for recombinant GST tagged SSSCA1 is 1 ng/ml as a capture antibody.

[Protocol Download](#)

- ELISA

Gene Info — SSSCA1

Entrez GeneID [10534](#)**GeneBank Accession#** [BC014791](#)**Protein Accession#** [AAH14791.1](#)**Gene Name** SSSCA1**Gene Alias** p27**Gene Description** Sjogren syndrome/scleroderma autoantigen 1**Omim ID** [606044](#)**Gene Ontology** [Hyperlink](#)

Gene Summary This antigen is recognized by a subset of anti-centromere antibodies from patients with scleroderma and/or Sjogren's syndrome. Subcellular localization has not yet been established. [provided by RefSeq]

Other Designations Sjogren's syndrome/scleroderma autoantigen 1|centromeric autoantigen (27kD)