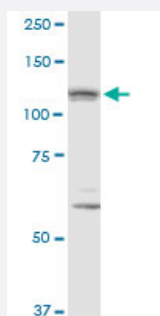


# IPO8 monoclonal antibody (M01), clone 3D5

Catalog # H00010526-M01

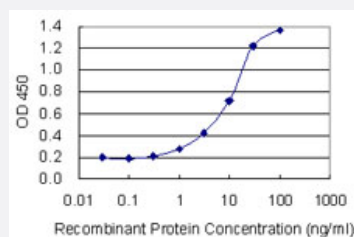
Size 100 ug

## Applications



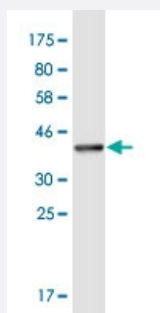
### Western Blot (Cell lysate)

IPO8 monoclonal antibody (M01), clone 3D5. Western Blot analysis of IPO8 expression in Hela S3 NE.



### Sandwich ELISA (Recombinant protein)

Detection limit for recombinant GST tagged IPO8 is 0.1 ng/ml as a capture antibody.



Western Blot detection against Immunogen (35.53 KDa) .

## Specification

### Product Description

Mouse monoclonal antibody raised against a partial recombinant IPO8.

<b>Immunogen</b>	IPO8 (NP_006381.2, 949 a.a. ~ 1037 a.a) partial recombinant protein with GST tag. MW of the GST tag alone is 26 KDa.
<b>Sequence</b>	LDLDNSVDEYQFFTQALITVQSRDAAWYQLLMAPLSEDQRTALQEVYTLAEHRRTVAEAKKKIEQ QGGFTFENKGVLSAFNFGTVPSNN
<b>Host</b>	Mouse
<b>Reactivity</b>	Human
<b>Interspecies Antigen Sequence</b>	Mouse (92)
<b>Isotype</b>	IgG1 Kappa
<b>Quality Control Testing</b>	Antibody Reactive Against Recombinant Protein. Western Blot detection against Immunogen (35.53 KDa) .
<b>Storage Buffer</b>	In 1x PBS, pH 7.4
<b>Storage Instruction</b>	Store at -20°C or lower. Aliquot to avoid repeated freezing and thawing.

## Applications

- Western Blot (Cell lysate)

IPO8 monoclonal antibody (M01), clone 3D5. Western Blot analysis of IPO8 expression in Hela S3 NE.

[Protocol Download](#)

- Western Blot (Recombinant protein)

[Protocol Download](#)

- Sandwich ELISA (Recombinant protein)

Detection limit for recombinant GST tagged IPO8 is 0.1 ng/ml as a capture antibody.

[Protocol Download](#)

- ELISA

## Gene Info — IPO8

Entrez GeneID [10526](#)

GeneBank Accession#	<a href="#">NM_006390</a>
Protein Accession#	<a href="#">NP_006381.2</a>
Gene Name	IPO8
Gene Alias	FLJ26580, RANBP8
Gene Description	importin 8
Omim ID	<a href="#">605600</a>
Gene Ontology	<a href="#">Hyperlink</a>
Gene Summary	<p>The importin-alpha/beta complex and the GTPase Ran mediate nuclear import of proteins with a classical nuclear localization signal. The protein encoded by this gene is a member of a class of approximately 20 potential Ran targets that share a sequence motif related to the Ran-binding site of importin-beta. This protein binds to the nuclear pore complex and, along with RanGTP and RANBP1, inhibits the GAP stimulation of the Ran GTPase. [provided by RefSeq</p>
Other Designations	RAN binding protein 8