

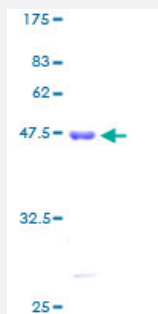
Full-Length

CIB1 (Human) Recombinant Protein (P01)

Catalog # H00010519-P01

Size 25 ug, 10 ug

Applications



Specification

Product Description	Human CIB1 full-length ORF (AAH00846, 1 a.a. - 191 a.a.) recombinant protein with GST-tag at N-terminal.
Sequence	MGGSGSRLSKELLA EYQDLTFLTKQEILLAHRRFCCELLPQEQRSVESLRAQVPFEQILSLPELKA NPFKERICRVFSTSPAKDSLSEDFDLDSVFSDTATPDIKSHYAFRIFDFDDGTLNREDLSRLV NCLTGEGEDTRLSASEMKQLIDNILEESDIDRDGTINLSEFQHVISRSPDFASSFKVL
Host	Wheat Germ (in vitro)
Theoretical MW (kDa)	46.75
Interspecies Antigen Sequence	Mouse (93); Rat (93)
Preparation Method	in vitro wheat germ expression system
Purification	Glutathione Sepharose 4 Fast Flow
Quality Control Testing	12.5% SDS-PAGE Stained with Coomassie Blue.
Storage Buffer	50 mM Tris-HCl, 10 mM reduced Glutathione, pH=8.0 in the elution buffer.
Storage Instruction	Store at -80°C. Aliquot to avoid repeated freezing and thawing.

Note

Best use within three months from the date of receipt of this protein.

Applications

- Enzyme-linked Immunoabsorbent Assay
- Western Blot (Recombinant protein)
- Antibody Production
- Protein Array

Gene Info — CIB1

Entrez GeneID [10519](#)

GeneBank Accession# [BC000846](#)

Protein Accession# [AAH00846](#)

Gene Name CIB1

Gene Alias CIB, KIP, KIP1, SIP2-28

Gene Description calcium and integrin binding 1 (calmyrin)

Omim ID [602293](#)

Gene Ontology [Hyperlink](#)

Gene Summary The protein encoded by this gene is a member of the calcium-binding protein family. The specific function of this protein has not yet been determined; however this protein is known to interact with DNA-dependent protein kinase and may play a role in kinase-phosphatase regulation of DNA end joining. This protein also interacts with integrin alpha(IIb)beta(3), which may implicate this protein as a regulatory molecule for alpha(IIb)beta(3). [provided by RefSeq]

Other Designations DNA-dependent protein kinase interacting protein|Snk interacting protein 2-28|calcium and integrin binding 1|calcium and integrin binding protein|calcium and integrin binding, protein kinase interacting protein|calmyrin

Disease

- [Cardiovascular Diseases](#)
- [Diabetes Mellitus](#)
- [Edema](#)