

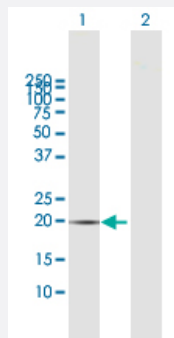
MaxPab®

CIB1 purified MaxPab mouse polyclonal antibody (B01P)

Catalog # H00010519-B01P

Size 50 ug

Applications



Western Blot (Transfected lysate)

Western Blot analysis of CIB1 expression in transfected 293T cell line ([H00010519-T01](#)) by CIB1 MaxPab polyclonal antibody.

Lane 1: CIB1 transfected lysate(21.01 kDa).

Lane 2: Non-transfected lysate.

Specification

Product Description	Mouse polyclonal antibody raised against a full-length human CIB1 protein.
Immunogen	CIB1 (AAH00846.1, 1 a.a. ~ 191 a.a) full-length human protein.
Sequence	MGGSGSRLSKELLA EYQDLTFLTKQEILLAHRRFCELLPQEQRSVESLRAQVPFEQILSLPELKA NPFKERICRVFSTSPAKDSLSFEDFLDLLSVFSDTATPDIKSHYAFRIFDFFDDGTLNREDLSRLV NCLTGEGEDTRLSASEMKQLIDNILEESDIDRDGTINLSEFQHVISRSPDFASSFKML
Host	Mouse
Reactivity	Human
Interspecies Antigen Sequence	Mouse (93); Rat (93)
Quality Control Testing	Antibody reactive against mammalian transfected lysate.
Storage Buffer	In 1x PBS, pH 7.4
Storage Instruction	Store at -20°C or lower. Aliquot to avoid repeated freezing and thawing.

Applications

- Western Blot (Transfected lysate)

Western Blot analysis of CIB1 expression in transfected 293T cell line ([H00010519-T01](#)) by CIB1 MaxPab polyclonal antibody.

Lane 1: CIB1 transfected lysate(21.01 KDa).

Lane 2: Non-transfected lysate.

[Protocol Download](#)

Gene Info — CIB1

Entrez GeneID [10519](#)

GeneBank Accession# [BC000846.2](#)

Protein Accession# [AAH00846.1](#)

Gene Name CIB1

Gene Alias CIB, KIP, KIP1, SIP2-28

Gene Description calcium and integrin binding 1 (calmyrin)

Omim ID [602293](#)

Gene Ontology [Hyperlink](#)

Gene Summary The protein encoded by this gene is a member of the calcium-binding protein family. The specific function of this protein has not yet been determined; however this protein is known to interact with DNA-dependent protein kinase and may play a role in kinase-phosphatase regulation of DNA end joining. This protein also interacts with integrin alpha(IIb)beta(3), which may implicate this protein as a regulatory molecule for alpha(IIb)beta(3). [provided by RefSeq]

Other Designations DNA-dependent protein kinase interacting protein|Snk interacting protein 2-28|calcium and integrin binding 1|calcium and integrin binding protein|calcium and integrin binding, protein kinase interacting protein|calmyrin

Disease

- [Cardiovascular Diseases](#)
- [Diabetes Mellitus](#)
- [Edema](#)