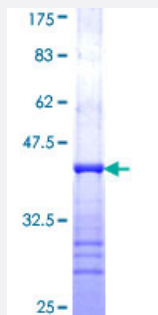


CIB2 (Human) Recombinant Protein (Q01)

Catalog # H00010518-Q01

Size 10 ug, 25 ug

Applications



Specification

Product Description	Human CIB2 partial ORF (NP_006374, 1 a.a. - 99 a.a.) recombinant protein with GST-tag at N-terminal.
Sequence	MGNKQTIFTEEQLDNYQDCTFFNKKDILKLHSRFYELAPNLVPM DYRKSPVHVPMSLIQMPELRE NPFKERIVA AFSEEDGEGNLTFNDFVDMF SVLC
Host	Wheat Germ (in vitro)
Theoretical MW (kDa)	36.63
Interspecies Antigen Sequence	Mouse (97); Rat (98)
Preparation Method	in vitro wheat germ expression system
Purification	Glutathione Sepharose 4 Fast Flow
Quality Control Testing	12.5% SDS-PAGE Stained with Coomassie Blue.
Storage Buffer	50 mM Tris-HCl, 10 mM reduced Glutathione, pH=8.0 in the elution buffer.
Storage Instruction	Store at -80°C. Aliquot to avoid repeated freezing and thawing.
Note	Best use within three months from the date of receipt of this protein.

Applications

- Enzyme-linked Immunoabsorbent Assay
- Western Blot (Recombinant protein)
- Antibody Production
- Protein Array

Gene Info — CIB2

Entrez GeneID	10518
---------------	-----------------------

GeneBank Accession#	NM_006383
---------------------	---------------------------

Protein Accession#	NP_006374
--------------------	---------------------------

Gene Name	CIB2
-----------	------

Gene Alias	KIP2
------------	------

Gene Description	calcium and integrin binding family member 2
------------------	--

Omim ID	605564
---------	------------------------

Gene Ontology	Hyperlink
---------------	---------------------------

Gene Summary	The amino acid sequence the protein encoded by this gene is similar to that of KIP/CIB, calcineurin B, and calmodulin. This suggests that the encoded protein may be a Ca ²⁺ -binding regulatory protein that interacts with DNA-dependent protein kinase catalytic subunit (DNA-PKcs). [provided by RefSeq]
--------------	---

Other Designations	2810434I23Rik DNA-dependent protein kinase catalytic subunit-interacting protein 2
--------------------	--