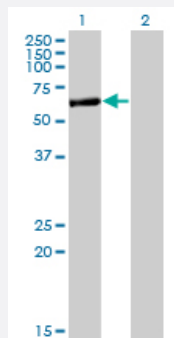


APPBP2 monoclonal antibody (M09), clone 4C2

Catalog # H00010513-M09

Size 100 ug

Applications

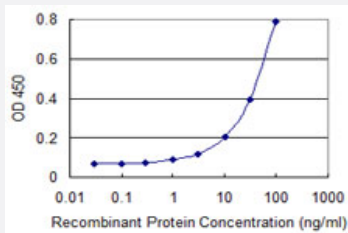


Western Blot (Transfected lysate)

Western Blot analysis of APPBP2 expression in transfected 293T cell line by APPBP2 monoclonal antibody (M09), clone 4C2.

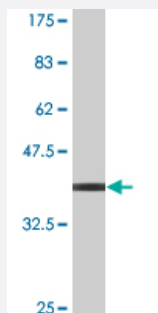
Lane 1: APPBP2 transfected lysate(66.9 KDa).

Lane 2: Non-transfected lysate.



Sandwich ELISA (Recombinant protein)

Detection limit for recombinant GST tagged APPBP2 is 1 ng/ml as a capture antibody.



Western Blot detection against Immunogen (36.74 KDa) .

Specification

Product Description

Mouse monoclonal antibody raised against a partial recombinant APPBP2.

Immunogen	APPBP2 (NP_006371, 486 a.a. ~ 585 a.a) partial recombinant protein with GST tag. MW of the GST tag alone is 26 KDa.
Sequence	NQYENAEKLYLRSIAIGKKLFGEGYSGLEYDYRGLIKLYNSIGNYEKVFHEYHNVLSNWNRLRDRQYS VTDALDVDSTSPQSTEEVVQSFLISQNVEGPSC
Host	Mouse
Reactivity	Human
Interspecies Antigen Sequence	Mouse (99); Rat (98)
Isotype	IgG2a Kappa
Quality Control Testing	Antibody Reactive Against Recombinant Protein. Western Blot detection against Immunogen (36.74 KDa) .
Storage Buffer	In 1x PBS, pH 7.4
Storage Instruction	Store at -20°C or lower. Aliquot to avoid repeated freezing and thawing.

Applications

- Western Blot (Transfected lysate)

Western Blot analysis of APPBP2 expression in transfected 293T cell line by APPBP2 monoclonal antibody (M09), clone 4C2.

Lane 1: APPBP2 transfected lysate(66.9 KDa).

Lane 2: Non-transfected lysate.

[Protocol Download](#)

- Western Blot (Recombinant protein)

[Protocol Download](#)

- Sandwich ELISA (Recombinant protein)

Detection limit for recombinant GST tagged APPBP2 is 1 ng/ml as a capture antibody.

[Protocol Download](#)

- ELISA

Gene Info — APPBP2

Entrez GeneID	10513
GeneBank Accession#	NM_006380
Protein Accession#	NP_006371
Gene Name	APPBP2
Gene Alias	HS.84084, KIAA0228, PAT1
Gene Description	amyloid beta precursor protein (cytoplasmic tail) binding protein 2
Omim ID	605324
Gene Ontology	Hyperlink
Gene Summary	<p>The protein encoded by this gene interacts with microtubules and is functionally associated with beta-amyloid precursor protein transport and/or processing. The beta-amyloid precursor protein is a cell surface protein with signal-transducing properties, and it is thought to play a role in the pathogenesis of Alzheimer's disease. This gene has been found to be highly expressed in breast cancer. Multiple polyadenylation sites have been found for this gene. [provided by RefSeq]</p>
Other Designations	amyloid beta precursor protein-binding protein 2 protein interacting with APP tail 1