

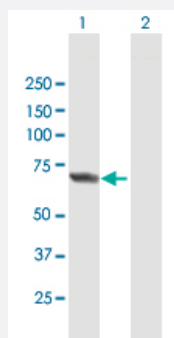
MaxPab®

APPBP2 purified MaxPab mouse polyclonal antibody (B01P)

Catalog # H00010513-B01P

Size 50 ug

Applications



Western Blot (Transfected lysate)

Western Blot analysis of APPBP2 expression in transfected 293T cell line ([H00010513-T01](#)) by APPBP2 MaxPab polyclonal antibody.

Lane 1: APPBP2 transfected lysate(64.35 KDa).

Lane 2: Non-transfected lysate.

Specification

Product Description

Mouse polyclonal antibody raised against a full-length human APPBP2 protein.

Immunogen

APPBP2 (NP_006371.2, 1 a.a. ~ 585 a.a) full-length human protein.

Sequence

MAAVELEWIPETLYNTAISAVVDNYIRSRRDIRSLPENIQFDVYYKLYQQGRLCQLGSEFCELEVFA
KVLRALDKRHLLHHCFCALMDHGVKVASVLAYSFSRRCSYAESDAAVKEKAIQVGFLGGFLSD
AGWYSDAEKVFLSCLQLCTLHDEMLHWFRAVECCVRLHVRNGNCKYHLGEETFKLAQTYMDK
LSKHGQQANKAALYGELCALLFAKSHYDEAYKWCIEAMKEITAGLPVKVVVDVLRQASKACVVK
REFKKAQEQLIKHAVYLARDHFGSKHPKYSDDLTDYGFYLLNVDNICQSVAIYQAALDIRQSVFGGKNI
HVATAHEDLAYSSYVHQYSSGKFDNALFHAERAIGIITHILPEDHLLASSKRVKALILEEIAIDCHNK
ETEQRLLQEADLHLSSLQLAKKAFGEFNVQTAKHYGNLGRLYQSMRKFKAEEMHIKAIQIKEQL
LGQEDYEVALSVGHLASLYNDMNQYENAEKLYLRSIAGKKLFGEGYSGLEYDYRGLIKLYNSIGNY
EKVFEYHNVLNWNRLRDRQYSVTDALEDVSTSPQSTEEVVQSFLISQNVGEPSC

Host

Mouse

Reactivity

Human

Interspecies Antigen Sequence

Mouse (99); Rat (98)

Quality Control Testing

Antibody reactive against mammalian transfected lysate.

Storage Buffer

In 1x PBS, pH 7.4

Storage Instruction

Store at -20°C or lower. Aliquot to avoid repeated freezing and thawing.

Applications

- Western Blot (Transfected lysate)

Western Blot analysis of APPBP2 expression in transfected 293T cell line ([H00010513-T01](#)) by APPBP2 MaxPab polyclonal antibody.

Lane 1: APPBP2 transfected lysate(64.35 KDa).

Lane 2: Non-transfected lysate.

[Protocol Download](#)

Gene Info — APPBP2

Entrez GeneID[10513](#)**GeneBank Accession#**[NM_006380.2](#)**Protein Accession#**[NP_006371.2](#)**Gene Name**

APPBP2

Gene Alias

HS.84084, KIAA0228, PAT1

Gene Description

amyloid beta precursor protein (cytoplasmic tail) binding protein 2

Omim ID[605324](#)**Gene Ontology**[Hyperlink](#)**Gene Summary**

The protein encoded by this gene interacts with microtubules and is functionally associated with beta-amyloid precursor protein transport and/or processing. The beta-amyloid precursor protein is a cell surface protein with signal-transducing properties, and it is thought to play a role in the pathogenesis of Alzheimer's disease. This gene has been found to be highly expressed in breast cancer. Multiple polyadenylation sites have been found for this gene. [provided by RefSeq]

Other Designations

amyloid beta precursor protein-binding protein 2|protein interacting with APP tail 1