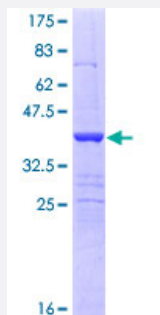


SEMA6B (Human) Recombinant Protein (Q01)

Catalog # H00010501-Q01

Size 25 ug, 10 ug

Applications



Specification

Product Description	Human SEMA6B partial ORF (NP_064626, 28 a.a. - 126 a.a.) recombinant protein with GST-tag at N-terminal.
Sequence	PEEPPPLSVAPRDYLNHYVPFVGSGPGRLTPAEGADDLNIQRVLRVNRTLFIGDRDNLRYVELEP PTSTELRYQRKLTWRSNPSDINVCRMKGKQESEC
Host	Wheat Germ (in vitro)
Theoretical MW (kDa)	36.63
Interspecies Antigen Sequence	Mouse (92); Rat (88)
Preparation Method	in vitro wheat germ expression system
Purification	Glutathione Sepharose 4 Fast Flow
Quality Control Testing	12.5% SDS-PAGE Stained with Coomassie Blue.
Storage Buffer	50 mM Tris-HCl, 10 mM reduced Glutathione, pH=8.0 in the elution buffer.
Storage Instruction	Store at -80°C. Aliquot to avoid repeated freezing and thawing.
Note	Best use within three months from the date of receipt of this protein.

Applications

- Enzyme-linked Immunoabsorbent Assay
- Western Blot (Recombinant protein)
- Antibody Production
- Protein Array

Gene Info — SEMA6B

Entrez GeneID [10501](#)

GeneBank Accession# [NM_020241](#)

Protein Accession# [NP_064626](#)

Gene Name SEMA6B

Gene Alias SEM-SEMA-Y, SEMA-VIB, SEMAN, semaZ

Gene Description sema domain, transmembrane domain (TM), and cytoplasmic domain, (semaphorin) 6B

Omim ID [608873](#)

Gene Ontology [Hyperlink](#)

Gene Summary This gene encodes a member of the semaphorin family, a group of proteins characterized by the presence of a conserved semaphorin (sema) domain. Whereas some semaphorins are transmembrane proteins, others are secreted. Semaphorins play a major role in axon guidance. The protein encoded by this gene may be involved in both peripheral and central nervous system development. [provided by RefSeq]

Other Designations semaphorin 6B|semaphorin VIB|semaphorin Z

Pathway

- [Axon guidance](#)