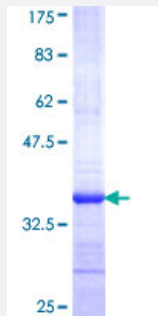


# ENOX2 (Human) Recombinant Protein (Q01)

Catalog # H00010495-Q01

Size 25 ug, 10 ug

## Applications



## Specification

<b>Product Description</b>	Human ENOX2 partial ORF ( NP_872114, 309 a.a. - 379 a.a.) recombinant protein with GST-tag at N-terminal.
<b>Sequence</b>	AHEKDMEEAKEKFKQALSGILIQFEQVAVYHSASKQKAWDHFTKAQRKNISVWCKQAEIIRNIHN DELMG
<b>Host</b>	Wheat Germ (in vitro)
<b>Theoretical MW (kDa)</b>	33.55
<b>Interspecies Antigen Sequence</b>	Mouse (90)
<b>Preparation Method</b>	<a href="#">in vitro wheat germ expression system</a>
<b>Purification</b>	Glutathione Sepharose 4 Fast Flow
<b>Quality Control Testing</b>	12.5% SDS-PAGE Stained with Coomassie Blue.
<b>Storage Buffer</b>	50 mM Tris-HCl, 10 mM reduced Glutathione, pH=8.0 in the elution buffer.
<b>Storage Instruction</b>	Store at -80°C. Aliquot to avoid repeated freezing and thawing.
<b>Note</b>	Best use within three months from the date of receipt of this protein.

## Applications

- Enzyme-linked Immunoabsorbent Assay
- Western Blot (Recombinant protein)
- Antibody Production
- Protein Array

## Gene Info — ENOX2

Entrez GeneID [10495](#)

GeneBank Accession# [NM\\_182314](#)

Protein Accession# [NP\\_872114](#)

Gene Name ENOX2

Gene Alias APK1, COVA1, tNOX

Gene Description ecto-NOX disulfide-thiol exchanger 2

Omim ID [300282](#)

Gene Ontology [Hyperlink](#)

**Gene Summary** The protein encoded by this gene is a growth-related cell surface protein. It was identified because it reacts with the monoclonal antibody KI in cells, such as the ovarian carcinoma line OVCAR-3, also expressing the CAKI surface glycoprotein. The encoded protein has two enzymatic activities: catalysis of hydroquinone or NADH oxidation, and protein disulfide interchange. The two activities alternate with a period length of about 24 minutes. The encoded protein also displays prion-like properties. Two transcript variants encoding different isoforms have been found for this gene. [provided by RefSeq]

**Other Designations** APK1 antigen|OTTHUMP00000024021|OTTHUMP00000024022|cytosolic ovarian carcinoma antigen 1