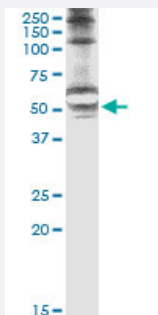


STK25 (Human) IP-WB Antibody Pair

Catalog # H00010494-PW1

Size 1 Set

Applications



Immunoprecipitation of STK25 transfected lysate using mouse monoclonal anti-STK25 and Protein A Magnetic Bead ([U0007](#)), and immunoblotted with mouse monoclonal anti-STK25.

Specification

Product Description	This IP-WB antibody pair set comes with one antibody for immunoprecipitation and another to detect the precipitated protein in western blot.
Reactivity	Human
Interspecies Antigen Sequence	Mouse (98); Rat (98)
Quality Control Testing	Immunoprecipitation-Western Blot (IP-WB) Immunoprecipitation of STK25 transfected lysate using mouse monoclonal anti-STK25 and Protein A Magnetic Bead (U0007), and immunoblotted with mouse monoclonal anti-STK25.
Supplied Product	Antibody pair set content: 1. Antibody pair for IP: mouse monoclonal anti-STK25 (300 ug) 2. Antibody pair for WB: mouse monoclonal anti-STK25 (50 ug)
Storage Instruction	Store reagents of the antibody pair set at -20°C or lower. Please aliquot to avoid repeated freeze thaw cycle. Reagents should be returned to -20°C storage immediately after use.

Applications

- Immunoprecipitation-Western Blot

[Protocol Download](#)

Gene Info — STK25

Entrez GeneID	10494
Gene Name	STK25
Gene Alias	DKFZp686J1430, SOK1, YSK1
Gene Description	serine/threonine kinase 25 (STE20 homolog, yeast)
Omim ID	602255
Gene Ontology	Hyperlink
Gene Summary	O
Other Designations	Ste20, yeast homolog serine/threonine kinase 25 serine/threonine kinase 25 (Ste20, yeast homolog) sterile 20 (oxidant stress response kinase 1; yeast Sps1/Ste20-related kinase 1)