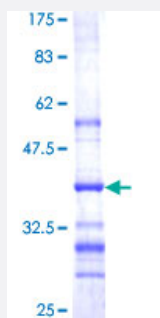


CRTAP (Human) Recombinant Protein (Q01)

Catalog # H00010491-Q01

Size 25 ug, 10 ug

Applications



Specification

Product Description	Human CRTAP partial ORF (NP_006362, 307 a.a. - 401 a.a.) recombinant protein with GST-tag at N-terminal.
Sequence	KLNDLKNAAPCAVSYLLFDQNDKVMQQNLVYYQYHRDTWGLSDEHFQPRPEAVQFFNVTTLQKE LYDFAKENIMDDDEGEVVEYVDDLLELEETS
Host	Wheat Germ (in vitro)
Theoretical MW (kDa)	36.19
Interspecies Antigen Sequence	Mouse (85)
Preparation Method	in vitro wheat germ expression system
Purification	Glutathione Sepharose 4 Fast Flow
Quality Control Testing	12.5% SDS-PAGE Stained with Coomassie Blue.
Storage Buffer	50 mM Tris-HCl, 10 mM reduced Glutathione, pH=8.0 in the elution buffer.
Storage Instruction	Store at -80°C. Aliquot to avoid repeated freezing and thawing.
Note	Best use within three months from the date of receipt of this protein.

Applications

- Enzyme-linked Immunoabsorbent Assay
- Western Blot (Recombinant protein)
- Antibody Production
- Protein Array

Gene Info — CRTAP

Entrez GeneID	10491
---------------	-----------------------

GeneBank Accession#	NM_006371
---------------------	---------------------------

Protein Accession#	NP_006362
--------------------	---------------------------

Gene Name	CRTAP
-----------	-------

Gene Alias	CASP, LEPREL3
------------	---------------

Gene Description	cartilage associated protein
------------------	------------------------------

Omim ID	605497 610682 610854
---------	--

Gene Ontology	Hyperlink
---------------	---------------------------

Gene Summary	The protein encoded by this gene is similar to the chicken and mouse CRTAP genes. The encoded protein is a scaffolding protein that may influence the activity of at least one member of the cytohesin/ARNO family in response to specific cellular stimuli. Defects in this gene are associated with osteogenesis imperfecta, a connective tissue disorder characterized by bone fragility and low bone mass. [provided by RefSeq]
--------------	---

Other Designations	leprecan-like 3
--------------------	-----------------