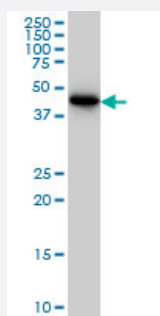


CRTAP monoclonal antibody (M01), clone 4D9

Catalog # H00010491-M01

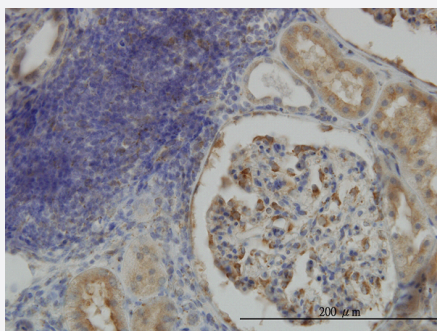
Size 100 ug

Applications



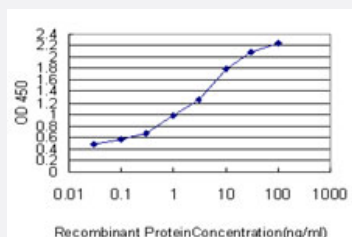
Western Blot (Cell lysate)

CRTAP monoclonal antibody (M01), clone 4D9 Western Blot analysis of CRTAP expression in HeLa (Cat # L013V1).



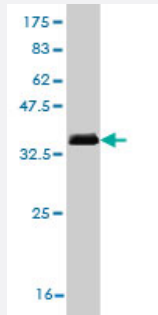
Immunohistochemistry (Formalin/PFA-fixed paraffin-embedded sections)

Immunoperoxidase of monoclonal antibody to CRTAP on formalin-fixed paraffin-embedded human kidney. [antibody concentration 3 ug/ml]



Sandwich ELISA (Recombinant protein)

Detection limit for recombinant GST tagged CRTAP is approximately 0.03ng/ml as a capture antibody.



Western Blot detection against Immunogen (36.19 KDa) .

Specification

Product Description	Mouse monoclonal antibody raised against a partial recombinant CRTAP.
Immunogen	CRTAP (NP_006362, 307 a.a. ~ 401 a.a) partial recombinant protein with GST tag. MW of the GST tag alone is 26 KDa.
Sequence	KLNDLKNAAPCAVSYLLFDQNDKVMQQNLVYYQYHRDTWGLSDEHFQPRPEAVQFFNVTTLQKE LYDFAKENIMDDDEGEVVEYVDDLLELEETS
Host	Mouse
Reactivity	Human
Interspecies Antigen Sequence	Mouse (85)
Isotype	IgG2a Kappa
Quality Control Testing	Antibody Reactive Against Recombinant Protein. Western Blot detection against Immunogen (36.19 KDa) .
Storage Buffer	In 1x PBS, pH 7.4
Storage Instruction	Store at -20°C or lower. Aliquot to avoid repeated freezing and thawing.

Applications

- Western Blot (Cell lysate)

CRTAP monoclonal antibody (M01), clone 4D9 Western Blot analysis of CRTAP expression in HeLa (Cat # L013V1).

[Protocol Download](#)

- Western Blot (Recombinant protein)

[Protocol Download](#)

- Immunohistochemistry (Formalin/PFA-fixed paraffin-embedded sections)

Immunoperoxidase of monoclonal antibody to CRTAP on formalin-fixed paraffin-embedded human kidney. [antibody concentration 3 ug/ml]

[Protocol Download](#)

- Sandwich ELISA (Recombinant protein)

Detection limit for recombinant GST tagged CRTAP is approximately 0.03ng/ml as a capture antibody.

[Protocol Download](#)

- ELISA

Gene Info — CRTAP

Entrez GeneID [10491](#)

GeneBank Accession# [NM_006371](#)

Protein Accession# [NP_006362](#)

Gene Name CRTAP

Gene Alias CASP, LEPREL3

Gene Description cartilage associated protein

Omim ID [605497](#) [610682](#) [610854](#)

Gene Ontology [Hyperlink](#)

Gene Summary The protein encoded by this gene is similar to the chicken and mouse CRTAP genes. The encoded protein is a scaffolding protein that may influence the activity of at least one member of the cytohesin/ARNO family in response to specific cellular stimuli. Defects in this gene are associated with osteogenesis imperfecta, a connective tissue disorder characterized by bone fragility and low bone mass. [provided by RefSeq]

Other Designations leprecan-like 3

Publication Reference

- [Genetic analysis, phenotype spectrum and functional study of rare osteogenesis imperfecta caused by CRTAP Variants.](#)

Bingna Zhou, Peng Gao, Jing Hu, Xiaoyun Lin, Lei Sun, Qian Zhang, Yan Jiang, Ou Wang, Weibo Xia, Xiaoping Xing, Mei Li.
The Journal of Clinical Endocrinology and Metabolism 2024 Jan; [Epub].

Application: WB, Human, Human Osteoblasts

- [Targeted exome sequencing identifies novel compound heterozygous mutations in LEPRE1 in a fetus with osteogenesis imperfecta type VIII.](#)

Huang Y, Mei L, Lv W, Li H, Zhang R, Pan Q, Tan H, Guo J, Luo X, Chen C, Liang D, Wu L.
Clinica Chimica Acta 2016 Nov; 464:170.

Application: WB, Human, PBMCs

- [Severe osteogenesis imperfecta in cyclophilin B-deficient mice.](#)

Choi JW, Sutor SL, Lindquist L, Evans GL, Madden BJ, Bergen HR 3rd, Hefferan TE, Yaszemski MJ, Bram RJ.
PLoS Genetics 2009 Dec; 5(12):e1000750.

Application: WB, Human, HeLa cells

- [Prolyl 3-hydroxylase 1 and CRTAP are mutually stabilizing in the endoplasmic reticulum collagen prolyl 3-hydroxylation complex.](#)

Chang W, Barnes AM, Cabral WA, Bodurtha JN, Marini JC.
Human Molecular Genetics 2010 Jan; 19(2):223.

Application: WB-Ce, WB-Tr, Human, Human fibroblasts