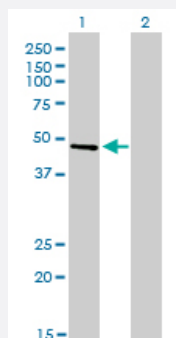


CREB3 monoclonal antibody (M01), clone 3H5

Catalog # H00010488-M01

Size 100 ug

Applications

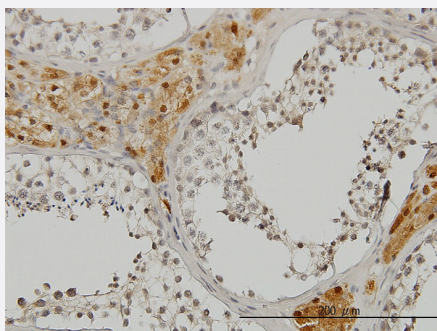


Western Blot (Transfected lysate)

Western Blot analysis of CREB3 expression in transfected 293T cell line by CREB3 monoclonal antibody (M01), clone 3H5.

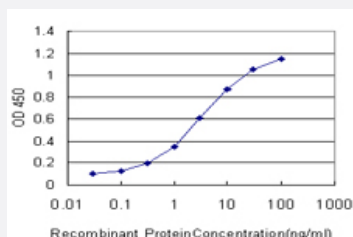
Lane 1: CREB3 transfected lysate (41.4 kDa).

Lane 2: Non-transfected lysate.



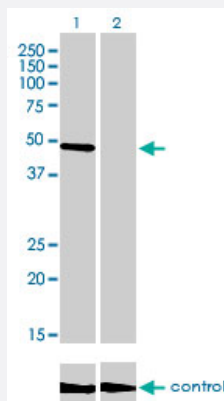
Immunohistochemistry (Formalin/PFA-fixed paraffin-embedded sections)

Immunoperoxidase of monoclonal antibody to CREB3 on formalin-fixed paraffin-embedded human testis. [antibody concentration 3 ug/ml]



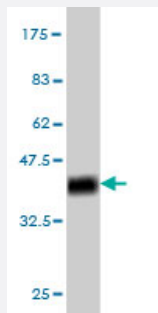
Sandwich ELISA (Recombinant protein)

Detection limit for recombinant GST tagged CREB3 is approximately 0.1 ng/ml as a capture antibody.



RNAi Knockdown (Antibody validated)

Western blot analysis of CREB3 over-expressed 293 cell line, cotransfected with CREB3 Validated Chimera RNAi (Cat # H00010488-R01V) (Lane 2) or non-transfected control (Lane 1). Blot probed with CREB3 monoclonal antibody (M01), clone 3H5 (Cat # H00010488-M01). GAPDH (36.1 kDa) used as specificity and loading control.



Western Blot detection against Immunogen (36.63 KDa) .

Specification

Product Description	Mouse monoclonal antibody raised against a partial recombinant CREB3.
Immunogen	CREB3 (NP_006359, 273 a.a. ~ 371 a.a) partial recombinant protein with GST tag. MW of the GST tag alone is 26 KDa.
Sequence	DPYQLELPALQSEVPKDSHQWLDGSDCVLQAPGNTSCLLHYMPQAPSAEPPLEWPFDPDLFSE PLCRGPILPLQANLTRKGGWLPTGSPSVILQDRYSG
Host	Mouse
Reactivity	Human
Interspecies Antigen Sequence	Mouse (66); Rat (55)
Isotype	IgG2a Kappa
Quality Control Testing	Antibody Reactive Against Recombinant Protein. Western Blot detection against Immunogen (36.63 KDa) .
Storage Buffer	In 1x PBS, pH 7.4
Storage Instruction	Store at -20°C or lower. Aliquot to avoid repeated freezing and thawing.

Applications

- Western Blot (Transfected lysate)

Western Blot analysis of CREB3 expression in transfected 293T cell line by CREB3 monoclonal antibody (M01), clone 3H5.

Lane 1: CREB3 transfected lysate(41.4 KDa).

Lane 2: Non-transfected lysate.

[Protocol Download](#)

- Western Blot (Recombinant protein)

[Protocol Download](#)

- Immunohistochemistry (Formalin/PFA-fixed paraffin-embedded sections)

Immunoperoxidase of monoclonal antibody to CREB3 on formalin-fixed paraffin-embedded human testis. [antibody concentration 3 ug/ml]

[Protocol Download](#)

- Sandwich ELISA (Recombinant protein)

Detection limit for recombinant GST tagged CREB3 is approximately 0.1ng/ml as a capture antibody.

[Protocol Download](#)

- ELISA

- RNAi Knockdown (Antibody validated)

Western blot analysis of CREB3 over-expressed 293 cell line, cotransfected with CREB3 Validated Chimera RNAi (Cat # H00010488-R01V) (Lane 2) or non-transfected control (Lane 1). Blot probed with CREB3 monoclonal antibody (M01), clone 3H5 (Cat # H00010488-M01). GAPDH (36.1 kDa) used as specificity and loading control.

[Protocol Download](#)

Gene Info — CREB3

Entrez GeneID	10488
---------------	-----------------------

GeneBank Accession#	NM_006368
---------------------	---------------------------

Protein Accession#	NP_006359
--------------------	---------------------------

Gene Name	CREB3
-----------	-------

Gene Alias	LUMAN, LZIP, MGC15333, MGC19782
Gene Description	cAMP responsive element binding protein 3
Omim ID	606443
Gene Ontology	Hyperlink
Gene Summary	<p>This gene encodes a transcription factor that is a member of the leucine zipper family of DNA binding proteins. This protein binds to the cAMP-responsive element, an octameric palindrome. The protein interacts with host cell factor C1, which also associates with the herpes simplex virus (HSV) protein VP16 that induces transcription of HSV immediate-early genes. This protein and VP16 both bind to the same site on host cell factor C1. It is thought that the interaction between this protein and host cell factor C1 plays a role in the establishment of latency during HSV infection. An additional transcript variant has been identified, but its biological validity has not been determined. [provided by RefSeq]</p>
Other Designations	OTTHUMP00000021348 basic leucine zipper protein cyclic AMP response element (CRE)-binding protein/activating transcription factor 1 transcription factor LZIP-alpha

Pathway

- [Melanogenesis](#)
- [Prostate cancer](#)

Disease

- [Bipolar Disorder](#)
- [Genetic Predisposition to Disease](#)