

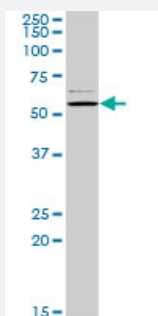
MaxPab®

## CAP1 purified MaxPab rabbit polyclonal antibody (D01P)

Catalog # H00010487-D01P

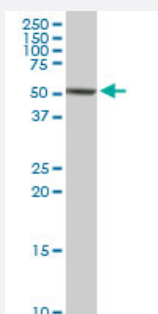
Size 100 ug

### Applications



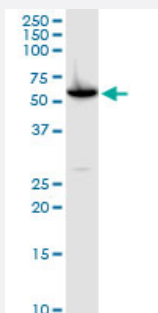
#### Western Blot (Tissue lysate)

CAP1 MaxPab rabbit polyclonal antibody. Western Blot analysis of CAP1 expression in mouse spleen.



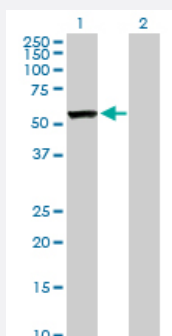
#### Western Blot (Tissue lysate)

CAP1 MaxPab rabbit polyclonal antibody. Western Blot analysis of CAP1 expression in human pancreas.



#### Western Blot (Cell lysate)

CAP1 MaxPab rabbit polyclonal antibody. Western Blot analysis of CAP1 expression in HepG2.

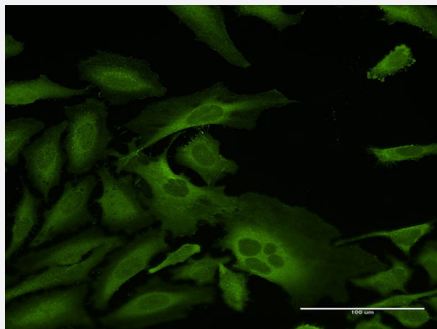


#### Western Blot (Transfected lysate)

Western Blot analysis of CAP1 expression in transfected 293T cell line ([H00010487-T02](#)) by CAP1 MaxPab polyclonal antibody.

Lane 1: CAP1 transfected lysate(51.70 KDa).

Lane 2: Non-transfected lysate.



## Immunofluorescence

Immunofluorescence of purified MaxPab antibody to CAP1 on HeLa cell.  
[antibody concentration 10 ug/ml]

## Specification

<b>Product Description</b>	Rabbit polyclonal antibody raised against a full-length human CAP1 protein.
<b>Immunogen</b>	CAP1 (NP_006358.1, 1 a.a. ~ 475 a.a) full-length human protein.
<b>Sequence</b>	MADMQNLVERLERAVGRLEAVSHTSDMHRGYADSPSKAGAAPYVQAFDSLLAGPVAEYLKISKE IGGDVQKHAEMVHTGLKLERALLVTASQCQQPAENKLSDLLAPISEKIKEVITFREKNRGSKLFNH LSAVSESIQALGWVAMAPKPGPYVKEMNDAAMFYTNRVLKEYKDVDKHHVDWVKAYLSMTELQ AYIKEFHHTGLAWSKTGPVAKELSGLPSPGSPAGSGPPPPPPGPPPPPVSTSSGSDESASRSALF AQINQGESITHALKHVSDDMKTHKNPALKAQSGPVRSGPKPFSAPKPQTSPSPKRATKKEPAVL ELEGKKWRVENQENVSNLVIEDTELKQVAYIKCVNTTLQIKGKINSITVDNCKKLGLVFDDVVGME IINSKDVKVQVMGKVPTISINKTDGCHAYLSKNSLDCEIVSAKSSEMNVLIPTTEGGDFNEFPVPEQF KTLWNGQKLVTTVTEIAG
<b>Host</b>	Rabbit
<b>Reactivity</b>	Human, Mouse
<b>Interspecies Antigen Sequence</b>	Mouse (95); Rat (95)
<b>Quality Control Testing</b>	Antibody reactive against mammalian transfected lysate.
<b>Storage Buffer</b>	In 1x PBS, pH 7.4
<b>Storage Instruction</b>	Store at -20°C or lower. Aliquot to avoid repeated freezing and thawing.

## Applications

- Western Blot (Tissue lysate)

CAP1 MaxPab rabbit polyclonal antibody. Western Blot analysis of CAP1 expression in mouse spleen.

[Protocol Download](#)

- Western Blot (Tissue lysate)

CAP1 MaxPab rabbit polyclonal antibody. Western Blot analysis of CAP1 expression in human pancreas.

[Protocol Download](#)

- Western Blot (Cell lysate)

CAP1 MaxPab rabbit polyclonal antibody. Western Blot analysis of CAP1 expression in HepG2.

[Protocol Download](#)

- Western Blot (Transfected lysate)

Western Blot analysis of CAP1 expression in transfected 293T cell line ([H00010487-T02](#)) by CAP1 MaxPab polyclonal antibody.

Lane 1: CAP1 transfected lysate(51.70 KDa).

Lane 2: Non-transfected lysate.

[Protocol Download](#)

- Immunofluorescence

Immunofluorescence of purified MaxPab antibody to CAP1 on HeLa cell. [antibody concentration 10 ug/ml]

## Gene Info — CAP1

Entrez GeneID [10487](#)

GeneBank Accession# [NM\\_006367](#)

Protein Accession# [NP\\_006358.1](#)

Gene Name CAP1

Gene Alias CAP, CAP1-PEN

Gene Description CAP, adenylate cyclase-associated protein 1 (yeast)

Gene Ontology [Hyperlink](#)

**Gene Summary** The protein encoded by this gene is related to the *S. cerevisiae* CAP protein, which is involved in the cyclic AMP pathway. The human protein is able to interact with other molecules of the same protein, as well as with CAP2 and actin. Alternatively spliced transcript variants have been identified . [provided by RefSeq]

**Other Designations** OTTHUMP00000004820|OTTHUMP00000004821|OTTHUMP00000004822|adenyl cyclase-associated protein

## Disease

- [Diabetes Mellitus](#)
- [Genetic Predisposition to Disease](#)