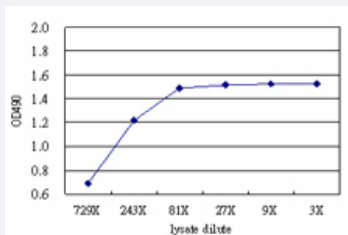


CAP1 (Human) Matched Antibody Pair

Catalog # H00010487-AP51

Size 1 Set

Applications



Sandwich ELISA detection sensitivity ranging from approximately 729x to 3x dilution of the CAP1 293T overexpression lysate (non-denatured).

Specification

Product Description	This antibody pair set comes with a matched antibody pair to detect and quantify the protein level of human CAP1.
Reactivity	Human
Interspecies Antigen Sequence	Mouse (95); Rat (95)
Quality Control Testing	Standard curve using CAP1 293T overexpression lysate (non-denatured) as an analyte. Sandwich ELISA detection sensitivity ranging from approximately 729x to 3x dilution of the CAP1 293T overexpression lysate (non-denatured).
Supplied Product	Antibody pair set content: 1. Capture antibody: mouse monoclonal anti-CAP1 (100 ug) 2. Detection antibody: rabbit purified polyclonal anti-CAP1 (50 ug) *Reagents are sufficient for at least 3-5 x 96 well plates using recommended protocols.
Storage Instruction	Store reagents of the antibody pair set at -20°C or lower. Please aliquot to avoid repeated freeze thaw cycle. Reagents should be returned to -20°C storage immediately after use.

Applications

- [ELISA Pair \(Transfected lysate\)](#)

[Protocol Download](#)

Gene Info — CAP1

Entrez GeneID [10487](#)

Gene Name CAP1

Gene Alias CAP, CAP1-PEN

Gene Description CAP, adenylate cyclase-associated protein 1 (yeast)

Gene Ontology [Hyperlink](#)

Gene Summary The protein encoded by this gene is related to the *S. cerevisiae* CAP protein, which is involved in the cyclic AMP pathway. The human protein is able to interact with other molecules of the same protein, as well as with CAP2 and actin. Alternatively spliced transcript variants have been identified . [provided by RefSeq]

Other Designations OTTHUMP00000004820|OTTHUMP00000004821|OTTHUMP00000004822|adenylyl cyclase-associated protein

Disease

- [Diabetes Mellitus](#)
- [Genetic Predisposition to Disease](#)