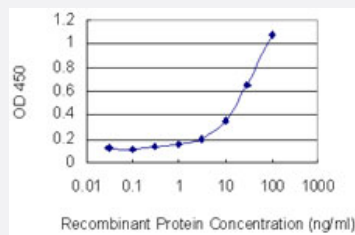


# HOXB13 monoclonal antibody (M07), clone 1E9

Catalog # H00010481-M07

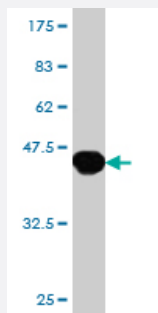
Size 100 ug

## Applications



### Sandwich ELISA (Recombinant protein)

Detection limit for recombinant GST tagged HOXB13 is 1 ng/ml as a capture antibody.



Western Blot detection against Immunogen (42.79 KDa) .

## Specification

### Product Description

Mouse monoclonal antibody raised against a partial recombinant HOXB13.

### Immunogen

HOXB13 (AAH07092.1, 61 a.a. ~ 216 a.a) partial recombinant protein with GST tag. MW of the GST tag alone is 26 KDa.

### Sequence

KQCHPCPGVPQGTSPAPVPYGYFGGGYYSCRVSRSSLKPCAQAATLAAYPAETPTAGEEYPSR  
PTEFAFYPGYPGTYPMASYLDVSVVQTLGAPGEPRHDSLLPVDSYQSWALAGGWNSQMCCQ  
GEQNPPGPFWKAADFADSSGQHPPDACAFRRG

### Host

Mouse

### Reactivity

Human

Interspecies Antigen Sequence	Mouse (93); Rat (93)
Isotype	IgG2b Kappa
Quality Control Testing	Antibody Reactive Against Recombinant Protein. Western Blot detection against Immunogen (42.79 KDa) .
Storage Buffer	In 1x PBS, pH 7.4
Storage Instruction	Store at -20°C or lower. Aliquot to avoid repeated freezing and thawing.

## Applications

- Western Blot (Recombinant protein)

[Protocol Download](#)

- Sandwich ELISA (Recombinant protein)

Detection limit for recombinant GST tagged HOXB13 is 1 ng/ml as a capture antibody.

[Protocol Download](#)

- ELISA

## Gene Info — HOXB13

Entrez GeneID	<a href="#">10481</a>
GeneBank Accession#	<a href="#">BC007092</a>
Protein Accession#	<a href="#">AAH07092.1</a>
Gene Name	HOXB13
Gene Alias	PSGD
Gene Description	homeobox B13
Omim ID	<a href="#">604607</a>
Gene Ontology	<a href="#">Hyperlink</a>

**Gene Summary**

This gene encodes a transcription factor that belongs to the homeobox gene family. Genes of this family are highly conserved among vertebrates and essential for vertebrate embryonic development. This gene has been implicated to play a role in fetal skin development and cutaneous regeneration. In mice, a similar gene was shown to exhibit temporal and spatial colinearity in the main body axis of the embryo, but was not expressed in the secondary axes, which suggests functions in body patterning along the axis. This gene and other HOXB genes form a gene cluster at chromosome the 17q21-22 region. [provided by RefSeq]

**Other Designations**

homeo box B13

**Disease**

- [Breast cancer](#)
- [Breast Neoplasms](#)