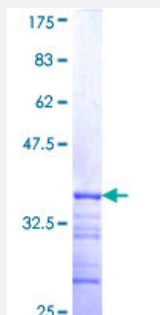


SLC9A6 (Human) Recombinant Protein (Q01)

Catalog # H00010479-Q01

Size 25 ug, 10 ug

Applications



Specification

Product Description	Human SLC9A6 partial ORF (NP_006350, 602 a.a. - 669 a.a.) recombinant protein with GST-tag at N-terminal.
Sequence	YGDSTVNTEPATSSAPRRFMGNSSDALDRELAFGDHELVIRGTRLVLPMD DSEPPLNLLDNTRH GPA
Host	Wheat Germ (in vitro)
Theoretical MW (kDa)	33.22
Preparation Method	in vitro wheat germ expression system
Purification	Glutathione Sepharose 4 Fast Flow
Quality Control Testing	12.5% SDS-PAGE Stained with Coomassie Blue.
Storage Buffer	50 mM Tris-HCl, 10 mM reduced Glutathione, pH=8.0 in the elution buffer.
Storage Instruction	Store at -80°C. Aliquot to avoid repeated freezing and thawing.
Note	Best use within three months from the date of receipt of this protein.

Applications

- Enzyme-linked Immunoabsorbent Assay
- Western Blot (Recombinant protein)
- Antibody Production
- Protein Array

Gene Info — SLC9A6

Entrez GeneID [10479](#)

GeneBank Accession# [NM_006359](#)

Protein Accession# [NP_006350](#)

Gene Name SLC9A6

Gene Alias KIAA0267, MRSA, NHE6

Gene Description solute carrier family 9 (sodium/hydrogen exchanger), member 6

Omim ID [300231](#)

Gene Ontology [Hyperlink](#)

Gene Summary The SLC9A6 gene encodes a monovalent sodium-selective sodium/hydrogen exchanger (NHE) that is found in the membranes of intracellular organelles such as mitochondria and endosomes. NHEs participate in a wide array of essential cellular processes, including control of intracellular pH, maintenance of cellular volume, and reabsorption of sodium across renal, intestinal, and other epithelia.[supplied by OMIM]

Other Designations OTTHUMP00000024089|OTTHUMP00000024090

Pathway

- [Cardiac muscle contraction](#)

Disease

- [Angelman Syndrome](#)